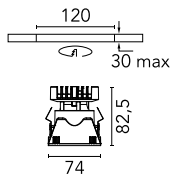


## Kap 80 Square Fixed Optic Medium - Dim-To-Warm

■ 03.4182.74.LE - Black

Recessed luminaire with LED light source. 220-240V & dimmable 1-10V power supply included.

Recessed luminaire with LED light source. 220-240V & dimmable 1-10V power supply included.

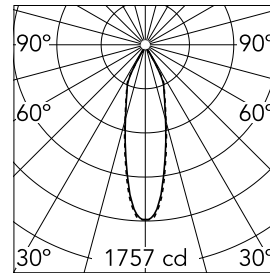


### Main specifications

<b>Number of heads</b>	1	<b>Net lumen (lm)</b>	669
<b>Lamp category</b>	LED	<b>Mountings</b>	Ceiling recessed
<b>Power (W)</b>	13W	<b>Environment</b>	Indoor dry location
<b>CCT (K)</b>	2850K-1800K		
<b>CRI</b>	95		

### Optical

<b>Lighting type</b>	Direct
<b>LED type</b>	LED array
<b>Light distribution</b>	Symmetric
<b>Optical type</b>	Medium
<b>Beam angle (°)</b>	27
<b>Beam angle C90-270 (°)</b>	27
<b>Efficiency (lm/W)</b>	51



<b>Beam Angle:</b>	27°		
	<b>h(m)</b>	<b>E(lx)</b>	<b>D(m)</b>
1	1757	0.48	
2	439	0.96	
3	195	1.44	
4	110	1.93	
5	70	2.41	

Luminous flux luminaire  
669 lm (EXTREME CUT OFF)

### Electrical

<b>Frequency (Hz)</b>	50/60	<b>Driver type</b>	Dimmable 1-10V
<b>Voltage (V)</b>	33.00	<b>Emergency</b>	Without
<b>Current (mA)</b>	300	<b>Insulation class</b>	II
<b>Dimmable</b>	Yes		
<b>Driver</b>	Remote included		

### Physical

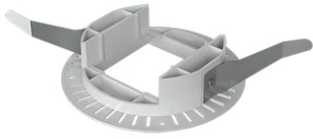
<b>Color</b>	Black
<b>Orientation</b>	Fixed
<b>Recessed depth (mm)</b>	93
<b>Weight (kg)</b>	0.24

### Note

For 110V PSU versions, please consult with the front office. Diffusing lens included.



## Kap 80 Square Fixed Optic Medium - Dim-To-Warm



---

Installation frame No Trim  
08.9103.00