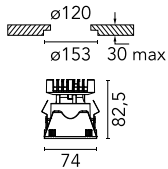
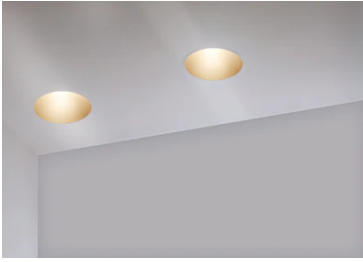


Kap 80 Square Fixed Optic Flood - Dim-To-Warm

■ 03.4536.CU.LE - Copper

Recessed luminaire with LED light source. 220-240V & dimmable 1-10V power supply included.

Recessed luminaire with LED light source. 220-240V & dimmable 1-10V power supply included.

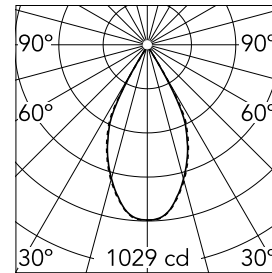


Main specifications

Number of heads	1	Net lumen (lm)	703
Lamp category	LED	Mountings	Ceiling recessed
Power (W)	13W	Environment	Indoor
CCT (K)	2850K-1800K		
CRI	95		

Optical

Lighting type	Direct
LED type	LED array
Light distribution	Symmetric
Optical type	Flood
Beam angle (°)	52
Beam angle C90-270 (°)	52



Beam Angle: 52°

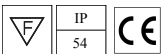
h(m)	E(lx)	D(m)
1	1029	0.97
2	257	1.94
3	114	2.92
4	64	3.89
5	41	4.86

Luminous flux luminaire
703 lm (EXTREME CUT OFF)

Electrical

Frequency (Hz)	50/60	Emergency	Without
Voltage (V)	33.00	Insulation class	II
Dimmable	Yes		
Driver	Remote		
Driver type	Electronic dimmable 1-10V		

Certification / Marking



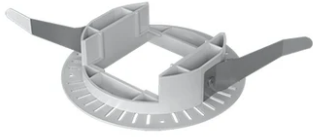
Physical

Color	Copper
Orientation	Fixed
Recessed depth (mm)	93
Weight (kg)	0.24
Spot diameter (mm)	74

Note

For 110V PSU versions, please consult with the front office. Diffusing lens included.

Kap 80 Square Fixed Optic Flood - Dim-To-Warm



Installation frame No Trim
08.9103.00