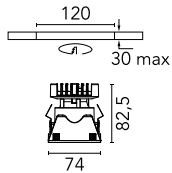


Kap 80 Square Fixed Optic Flood - Dim-To-Warm

03.4536.B1.LE - White

Recessed luminaire with LED light source. 220-240V & dimmable 1-10V power supply included.

Recessed luminaire with LED light source. 220-240V & dimmable 1-10V power supply included.

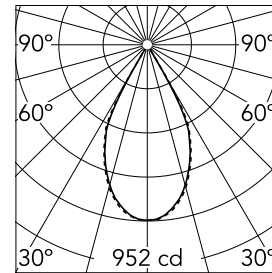


Main specifications

Number of heads	1	Net lumen (lm)	736
Lamp category	LED	Mountings	Ceiling recessed
Power (W)	13W	Environment	Indoor
CCT (K)	2850K-1800K		
CRI	95		

Optical

Lighting type	Direct
LED type	LED array
Light distribution	Symmetric
Optical type	Flood
Beam angle (°)	54
Beam angle C90-270 (°)	56
Efficiency (lm/W)	56



Beam Angle: 54°

h(m)	E(lx)	D(m)
1	952	1.02
2	238	2.04
3	106	3.06
4	59	4.08
5	38	5.10

Luminous flux luminaire
736 lm (EXTREME CUT OFF)

Electrical

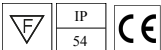
Frequency (Hz)	50/60	Driver type	Electronic dimmable 1-10V
Voltage (V)	33.00	Emergency	Without
Current (mA)	300	Insulation class	II
Dimmable	Yes		
Driver	Remote		

Physical

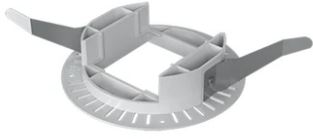
Color	White
Orientation	Fixed
Recessed depth (mm)	93
Weight (kg)	0.24

Note

For 110V PSU versions, please consult with the front office. Diffusing lens included.



Kap 80 Square Fixed Optic Flood - Dim-To-Warm



Installation frame No Trim
08.9103.00