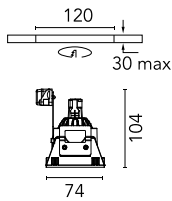


## Kap 80 Square Fixed

■ 03.4226.CU - Copper

Recessed 12V lamp luminaire. Remote transformer not included.



### Main specifications

Number of heads	1
Lamp category	LED retrofit
Net lumen (lm)	687
Mountings	Ceiling recessed
Environment	Indoor dry location

### Optical

Lighting type	Direct
Lamp type	QR-CBC 51
Light distribution	Symmetric
Beam angle (°)	18
Beam angle C90-270 (°)	19

### Electrical

Frequency (Hz)	50/60	Driver type	Electronic 12V
Voltage (V)	12.00	Emergency	Without
Lamp holder	GX5.3	Insulation class	III
Dimmable	No		
Driver	Remote excluded		

### Physical

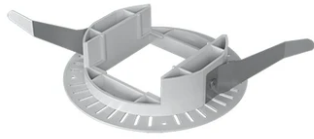
Color	Copper
Orientation	Fixed
Recessed depth (mm)	130
Weight (kg)	0.12

### Note

Not suitable for lens accessories.



## Kap 80 Square Fixed



---

Installation frame No Trim  
08.9103.00

12V electronic transformer. 220/240V,  
50/60Hz. Adjustable by means of  
"leading and trailing edge"  
60.9424

12V Electronic Transformer 20-70W for  
LED Bulbs and Halogen Lamps  
60.9398