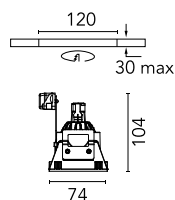


### Kap 80 Square Fixed

■ 03.4226.74 - Black

Recessed 12V lamp luminaire. Remote transformer not included.



#### Main specifications

Number of heads	1	Mountings	Ceiling recessed
Lamp category	LED retrofit	Environment	Indoor dry location
Power (W)	50W MAX		
System power (W)	50		
Net lumen (lm)	692		

#### Optical

Lighting type	Direct
Lamp type	QR-CBC 51
Light distribution	Symmetric
Beam angle (°)	18
Beam angle C90-270 (°)	19

#### Electrical

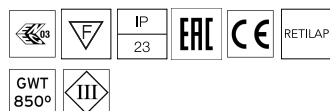
Voltage (V)	12	Driver type	Electronic 12V
Current (mA)	-9	Emergency	Without
Lamp holder	GX5.3	Insulation class	III
Dimmable	No		
Driver	Remote excluded		

#### Physical

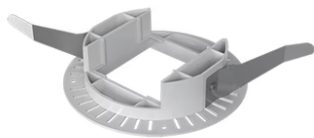
Color	Black
Orientation	Fixed
Recessed depth (mm)	130
Weight (kg)	0.12

#### Note

Not suitable for lens accessories.



# Kap 80 Square Fixed



Installation frame No Trim  
08.9103.00

12V Electronic Transformer 20-70W for  
LED Bulbs and Halogen Lamps  
60.9398

12V electronic transformer. 220/240V,  
50/60Hz. Adjustable by means of  
"leading and trailing edge"  
60.9424