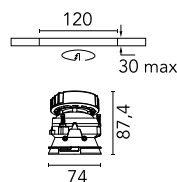


Kap 80 Square Adjustable Optic Medium - Dim-To-Warm

■ 03.4186.CU.LE - Copper

Recessed luminaire with LED light source. 220-240V & dimmable 1-10V power supply included.

Recessed luminaire with LED light source. 220-240V & dimmable 1-10V power supply included.

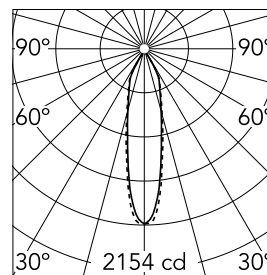


Main specifications

| | | | |
|------------------|-------------|----------------|---------------------|
| Number of heads | 1 | CRI | 95 |
| Lamp category | LED | Net lumen (lm) | 726 |
| Power (W) | 13W | Mountings | Ceiling recessed |
| System power (W) | 13 | Environment | Indoor dry location |
| CCT (K) | 2850K-1800K | | |

Optical

| | |
|------------------------|-----------|
| Lighting type | Direct |
| LED type | LED array |
| Light distribution | Symmetric |
| Optical type | Medium |
| Beam angle (°) | 22 |
| Beam angle C90-270 (°) | 22 |
| UGRL | 15 |
| Efficiency (lm/W) | 55 |



Beam Angle: 22°

| | h(m) | E(lx) | D(m) |
|---|------|-------|------|
| 1 | 2154 | 0.40 | |
| 2 | 538 | 0.79 | |
| 3 | 239 | 1.19 | |
| 4 | 135 | 1.59 | |
| 5 | 86 | 1.98 | |

Luminous flux luminaire
726 lm (EXTREME CUT OFF)

Electrical

| | | | |
|----------------|-----------------|------------------|----------------|
| Frequency (Hz) | 50/60 | Driver type | Dimmable 1-10V |
| Voltage (V) | 33 | Emergency | Without |
| Current (mA) | 300 | Insulation class | II |
| Dimmable | Yes | | |
| Driver | Remote included | | |

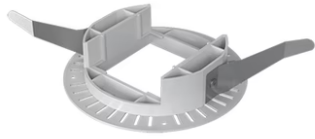
Physical

| | | | |
|---------------------|------------|--------------------|--------|
| Color | Copper | Rotation (°) | 360 |
| Orientation | Adjustable | Lifespan (L70 B10) | L80B50 |
| Recessed depth (mm) | 93 | | |
| Weight (kg) | 0.24 | | |
| Tilt (°) | 20 | | |

Note

For 110V PSU versions, please consult with the front office. Diffusing lens included.

Kap 80 Square Adjustable Optic Medium - Dim-To-Warm



Installation frame No Trim
08.9103.00