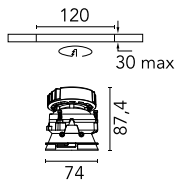
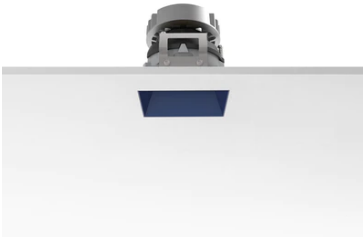


Kap 80 Square Adjustable Optic Medium

■ 03.4187.BU - Blue

Recessed luminaire with LED light source. Power supply not included.

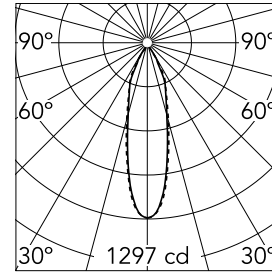


Main specifications

Number of heads	1	Net lumen (lm)	492
Lamp category	LED	Mountings	Ceiling recessed
Power (W)	9.2W	Environment	Indoor dry location
CCT (K)	2700K		
CRI	90		

Optical

Lighting type	Direct
LED type	LED array
Light distribution	Symmetric
Optical type	Medium
Beam angle (°)	27
Beam angle C90-270 (°)	28
Efficiency (lm/W)	53



Beam Angle:	27°		
	h(m)	E(lx)	D(m)
1	1297	0.47	
2	324	0.94	
3	144	1.41	
4	81	1.88	
5	52	2.36	

Luminous flux luminaire
492 lm (EXTREME CUT OFF)

Electrical

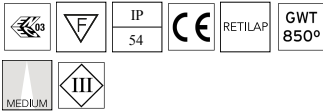
Voltage (V)	17.80	Emergency	Without
Current (mA)	500	Insulation class	III
Dimmable	Yes		
Driver	Remote excluded		
Driver type	Non Dimmable, Dimmable DALI 2, Dimmable 0-10V, Dimmable Casambi, Dimmable 1-10V, Dimmable DALI 1, Mains Cut Dimming		

Physical

Color	Blue	Rotation (°)	360
Orientation	Adjustable		
Recessed depth (mm)	91		
Weight (kg)	0.24		
Tilt (°)	20		

Note

Diffusing lens included.



Kap 80 Square Adjustable Optic Medium



Continuous current power supply of 10-20W, 110/240V – 50/60Hz with power current selected through adjustable 250 mA – 10W / 350 mA – 15W / 400 mA – 17W / 450 mA – 19W / 500/550/600/700 mA – 20W, Dali 1 switch.
60.8847



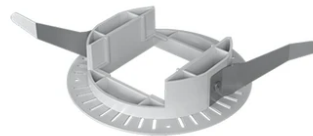
Continuous current power supply of 13-20W, 110/240V – 50/60Hz with power current selected through adjustable 300 mA – 15W / 350 mA – 18W / 400/450/500/550/600/650/700/750/800/850/900 mA – 15W. switch. 0/1-10V or push dimming
60.9188



Continuous current power supply, dimmable Casambi 220/240V-50/60Hz, 300mA-16W / 350mA-18,5W / 400mA-21,5W / 450mA-24W / 500mA-27W / 600mA-32W / 650mA-35W / 700mA-36W / 750/800/900/1000/1050mA – 38W
60.9207



Non dimmable continuous current power supply of 220/240V – 50/60Hz with power current selected through adjustable with switch 200 mA – 8,5W / 300 mA – 13W / 350 mA – 15W / 400 mA – 17,5W / 450 mA – 19,5W / 500 mA – 22W
60.9160



Installation frame No Trim
08.9103.00



Continuous current power supply, 1-10V, regulable Mains, leading & trailing edge 220/240V – 50/60Hz, 500mA – 10W
60.9411



Continuous current power supply of
12-20W, 110/240V – 50/60Hz with power
current selected through adjustable
350mA – 17W / 400mA – 19W / 450 / 550
/ 600 / 700mA – 20W regulable Dali 1 y
Dali 2
60.9222