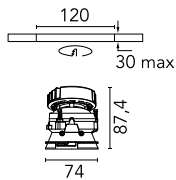
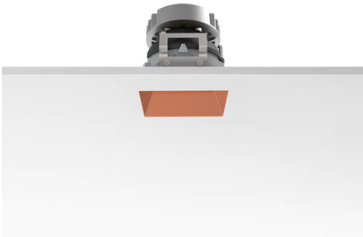


Kap 80 Square Adjustable Optic Flood - Dim-To-Warm

■ 03.4544.CU.LE - Copper

Recessed luminaire with LED light source. 220-240V & dimmable 1-10V power supply included.

Recessed luminaire with LED light source. 220-240V & dimmable 1-10V power supply included.

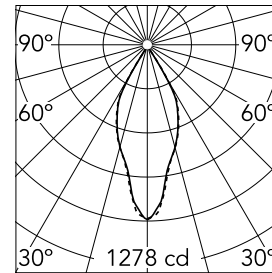


Main specifications

Number of heads	1	Net lumen (lm)	707
Lamp category	LED	Mountings	Ceiling recessed
Power (W)	13W	Environment	Indoor
CCT (K)	2850K-1800K		
CRI	95		

Optical

Lighting type	Direct
LED type	LED array
Light distribution	Symmetric
Optical type	Flood
Beam angle (°)	41
Beam angle C90-270 (°)	49
Efficiency (lm/W)	54



Beam Angle: 41°

h(m)	E(lx)	D(m)
1	1278	0.75
2	319	1.50
3	142	2.25
4	80	3.00
5	51	3.75

Luminous flux luminaire
707 lm (EXTREME CUT OFF)

Electrical

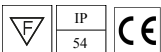
Frequency (Hz)	50/60	Driver type	Electronic dimmable 1-10V
Voltage (V)	33.00	Emergency	Without
Current (mA)	300	Insulation class	II
Dimmable	Yes		
Driver	Remote		

Physical

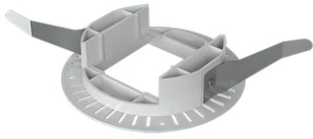
Color	Copper	Rotation (°)	360
Orientation	Adjustable		
Recessed depth (mm)	93		
Weight (kg)	0.24		
Tilt (°)	20		

Note

For 110V PSU versions, please consult with the front office. Diffusing lens included.



Kap 80 Square Adjustable Optic Flood - Dim-To-Warm



Installation frame No Trim
08.9103.00