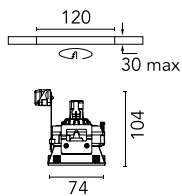


## Kap 80 Square Adjustable

■ 03.4234.74 - Black

Recessed 12V lamp luminaire. Remote transformer not included.



### Main specifications

|                        |                     |
|------------------------|---------------------|
| <b>Number of heads</b> | 1                   |
| <b>Lamp category</b>   | LED retrofit        |
| <b>Mountings</b>       | Ceiling recessed    |
| <b>Environment</b>     | Indoor dry location |

### Optical

|                           |           |
|---------------------------|-----------|
| <b>Lighting type</b>      | Direct    |
| <b>Lamp type</b>          | QR-CBC 51 |
| <b>Light distribution</b> | Symmetric |

### Electrical

|                       |                 |                         |                |
|-----------------------|-----------------|-------------------------|----------------|
| <b>Frequency (Hz)</b> | 50/60           | <b>Driver type</b>      | Electronic 12V |
| <b>Voltage (V)</b>    | 12.00           | <b>Emergency</b>        | Without        |
| <b>Lamp holder</b>    | GX5.3           | <b>Insulation class</b> | III            |
| <b>Dimmable</b>       | No              |                         |                |
| <b>Driver</b>         | Remote excluded |                         |                |

### Physical

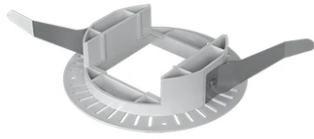
|                            |            |                     |     |
|----------------------------|------------|---------------------|-----|
| <b>Color</b>               | Black      | <b>Rotation (°)</b> | 360 |
| <b>Orientation</b>         | Adjustable |                     |     |
| <b>Recessed depth (mm)</b> | 120        |                     |     |
| <b>Weight (kg)</b>         | 0.12       |                     |     |
| <b>Tilt (°)</b>            | 20         |                     |     |

### Note

Not suitable for lens accessories.



## Kap 80 Square Adjustable



---

Installation frame No Trim  
08.9103.00

12V electronic transformer. 220/240V,  
50/60Hz. Adjustable by means of  
"leading and trailing edge"  
60.9424

12V Electronic Transformer 20-70W for  
LED Bulbs and Halogen Lamps  
60.9398