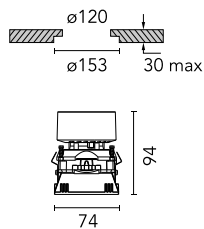
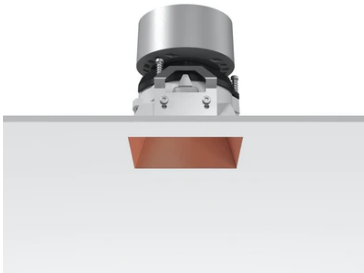


## Kap 80 Plus Square Adjustable Optic Flood

■ 05.7464.CU - Copper

Recessed luminaire with LED light source. Power supply not included Diffusing lens included.

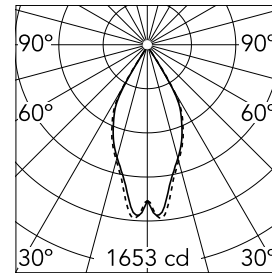


### Main specifications

<b>Number of heads</b>	1	<b>Net lumen (lm)</b>	1037
<b>Lamp category</b>	LED	<b>Mountings</b>	Ceiling recessed
<b>Power (W)</b>	13.4W	<b>Environment</b>	Indoor
<b>CCT (K)</b>	3000K		
<b>CRI</b>	90		

### Optical

<b>LED type</b>	LED array
<b>Light distribution</b>	Symmetric
<b>Optical type</b>	Flood
<b>Beam angle (°)</b>	48
<b>Beam angle C90-270 (°)</b>	49



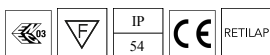
<b>Beam Angle:</b>	48°	
<b>h(m)</b>	<b>E(lx)</b>	<b>D(m)</b>
1	1653	0.88
2	413	1.77
3	184	2.65
4	103	3.53
5	66	4.42

Luminous flux luminaire  
1037 lm (EXTREME CUT OFF)

### Electrical

<b>Voltage (V)</b>	17,8	<b>Emergency</b>	Without
<b>Current (mA)</b>	700	<b>Insulation class</b>	III
<b>Dimmable</b>	Yes		
<b>Driver</b>	Remote		
<b>Driver type</b>	Electronic, Electronic dimmable, Electronic dimmable 1- 10V, Electronic dimmable DALI		

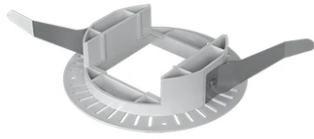
### Certification / Marking



### Physical

<b>Color</b>	Copper	<b>Rotation (°)</b>	360
<b>Orientation</b>	Adjustable	<b>Spot diameter (mm)</b>	80
<b>Recessed depth (mm)</b>	150	<b>Length (mm)</b>	74
<b>Weight (kg)</b>	0,241		
<b>Tilt (°)</b>	20		

## Kap 80 Plus Square Adjustable Optic Flood



---

Installation frame No Trim  
08.9103.00



---

Non dimmable continuous current power supply. 15-30W, 220/240V -50/60Hz with power current selected through adjustable switch.  
60.9592



---

Continuous current power supply of 13-20W, 110\*/240V – 50/60Hz with power current selected through adjustable switch. Synchronisation cables not included.  
60.9188



---

Constant Current Power Supply for LED. Dimmable DALI. 10-20W  
60.8847



---

Continuous current power supply of 12-20W, 110\*/240V – 50/60Hz with power current selected through adjustable. Regulable DALI 1 y DALI 2  
60.9222



---

Continuous current power supply, Mains dimming 220/240V – 50/60Hz, 12-20W  
60.9467



