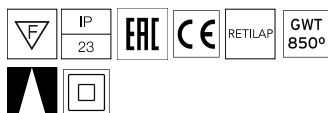
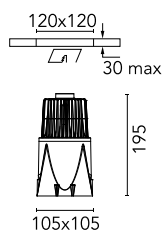


Kap 105 Square 1-10V

03.4583.B1.1V - White

Recessed luminaire with LED light source. Remote electronic transformer 220/240V included.

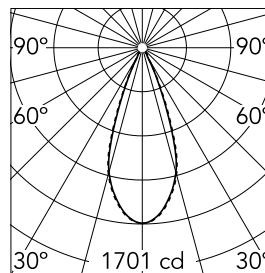


Main specifications

Number of heads	1	CRI	90
Lamp category	LED	Net lumen (lm)	946
Power (W)	17W	Mountings	Ceiling recessed
System power (W)	17	Environment	Indoor dry location
CCT (K)	2700K		

Optical

Lighting type	Direct
LED type	LED array
Light distribution	Symmetric
Optical type	Flood
Beam angle (°)	40
Beam angle C90-270 (°)	40
UGRL	19
Efficiency (lm/W)	55



Beam Angle: 40°

h(m)	E(lx)	D(m)
1	1701	0.72
2	425	1.44
3	189	2.16
4	106	2.87
5	68	3.59

Luminous flux luminaire
946 lm (EXTREME CUT OFF)

Electrical

Frequency (Hz)	50/60	Driver type	Dimmable 1-10V
Voltage (V)	28	Emergency	Without
Current (mA)	600	Insulation class	II
Dimmable	Yes		
Driver	Remote included		

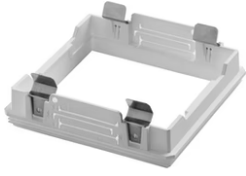
Physical

Color	White
Orientation	Fixed
Weight (kg)	0.84
Lifespan (L70 B10)	L80B50

Note

Pre-installation frame. To be ordered separately.

Kap 105 Square 1-10V



Installation frame No Trim
08.8479.00