

Kap 105 Square

03.4570.CUC - Copper

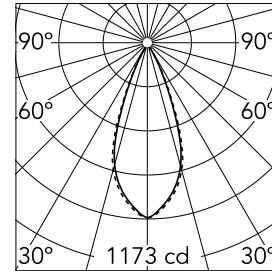
Recessed luminaire with LED light source. Remote electronic transformer 220/240V included.

Main specifications

Number of heads	1	CRI	98
Lamp category	LED	Net lumen (lm)	585
Power (W)	17W	Mountings	Ceiling recessed
System power (W)	17	Environment	Indoor dry location
CCT (K)	3000K		

Optical

Lighting type	Direct
LED type	Phosphor LED
Light distribution	Symmetric
Optical type	Flood
Beam angle (°)	41
Beam angle C90-270 (°)	42
UGRL	8
Efficiency (lm/W)	34



Beam Angle: 41°

h(m)	E(lx)	D(m)
1	1173	0.74
2	293	1.48
3	130	2.22
4	73	2.96
5	47	3.69

Luminous flux luminaire
585 lm (EXTREME CUT OFF)

Electrical

Frequency (Hz)	50/60	Driver type	Non Dimmable
Voltage (V)	18	Emergency	Without
Current (mA)	700	Insulation class	II
Dimmable	No		
Driver	Remote included		

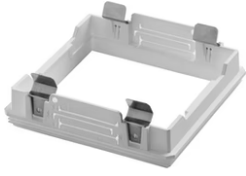
Physical

Color	Copper
Orientation	Fixed
Weight (kg)	0.84
Lifespan (L70 B10)	L80B50

Note

Pre-installation frame. To be ordered separately.

Kap 105 Square



Installation frame No Trim
08.8479.00