

## Johnny 120 Semi-Recessed 1L Square – Housing

■ 08.0556.CE - Concrete

Recessed luminaire with LED light source. Power supply not included. One driver is needed per each light source.



### Main specifications

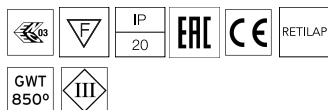
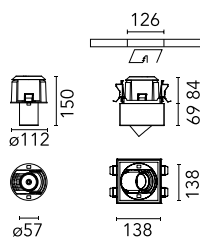
Mountings	Ceiling recessed
Environment	Indoor dry location

### Electrical

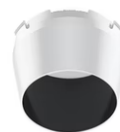
Emergency	Without
Insulation class	III

### Physical

Color	Concrete
Weight (kg)	0.30



## Johnny 120 Semi-Recessed 1L Square – Housing



Honeycomb  
08.8428.00

Continuous current power supply  
220/240V – 50/60Hz. Adjustable Current  
300mA-13W / 350mA-15W / 400mA-18W  
/ 450mA-20W / 500mA-22W / 550mA-  
24W / 600mA-27W / 650mA-29W /  
700mA-31W / 750mA-32W / 800mA-33W  
/ 850mA-35W / 900mA-38W / 950mA-  
40W / 1000/1050mA-42W  
60.9162

Snoot shielding cone  
08.0526.BW



Continuous current power supply.  
230/240V – 50/60Hz. Adjustable Current  
350mA – 17W / 500mA – 24W / 700/ 750  
mA – 32W switch by trailing and  
leading edge dimming, mains dimming  
or push dimming  
60.8534

Snoot shielding cone  
08.0526.40

Continuous current power supply of  
18W, 220/240V – 50/60Hz with 450 mA  
supply voltage Mains dimming, trailing  
edge  
60.9268




---

Elliptical lens  
08.8431.00




---

Continuous current power supply of  
13-20W, 110/240V – 50/60Hz with power  
current selected through adjustable  
300 mA – 15W / 350 mA – 18W /  
400/450/500/550/600/  
650/700/750/800/850/900 mA – 15W.  
switch. 0/1-10V or push dimming  
60.9188




---

Continuous current power supply of  
10-20W, 110/240V – 50/60Hz with power  
current selected through adjustable  
250 mA – 10W / 350 mA – 15W / 400 mA  
– 17W / 450 mA – 19W / 500/550/600/700  
mA – 20W, Dali 1 switch.  
60.8847




---

Flood lens  
08.8432.00




---

Snoot shielding cone  
08.0526.00