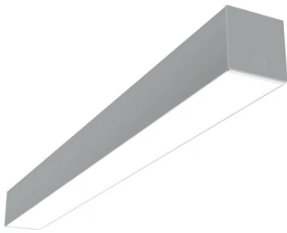


In-Finity 100 Surface Emergency 4000K Micro-Prismatic Diffuser

■ N10SEM4U02B - Anodized Grey

LED modular system for surface installation, including LED luminaires, aluminum installation profile, and diffusers. Drivers included in lighting modules for 220-240V connection to mains or to other lighting modules.



Main specifications

Lamp category	LED	Environment	Indoor dry location
Power (W)	25.5W/m		
CCT (K)	4000K		
CRI	80		
Mountings	Surface		

Optical

Lighting type	Direct
LED type	Top LED
Light distribution	Symmetric
Optical type	Diffused light

Electrical

Dimmable	No
Driver	Integrated
Driver type	Non Dimmable
Emergency	Without
Insulation class	I

Physical

Color	Anodized Grey
Orientation	Fixed
Weight (kg)	8.20
Length (mm)	1400

Note

Micro-Prismatic Diffuser: Highly efficient multilayer diffuser that, thanks to its unique micro-prismatic texture, provides a glare free UGR<19 light beam. / Emergency: Emergency Module available in all versions, length 1405 mm. In normal use, it uses the same power consumption as the standard In-Finity. In emergency use, it emits 10% of normal use during 3 hours. Endcaps: must be ordered separately. Consult Flos Architectural team for a configuration without end caps.



In-Finity 100 Surface Emergency 4000K Micro-Prismatic Diffuser



5

Metal End Cap. Recessed No Trim /
Surface / Suspension Down. 100 mm
(Colour White)
08.9054.40



5

Metal cover. Surface / Suspension
Down. 100 mm
08.9054.06



5

Metal End Cap. Recessed No Trim /
Surface / Suspension Down. 100 mm
(Colour Black)
08.9054.NS



500 mm micro-prismatic diffuser.
Highly efficient multilayer diffuser
that, thanks to its unique
microprismatic texture, provides a
glare free UGR<19 light beam
08.0114.00



5

Metal End Cap. Recessed No Trim /
Surface / Suspension Down. 100 mm
(Colour Anodized Grey)
08.9054.02