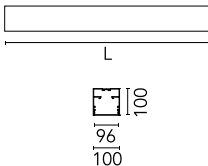
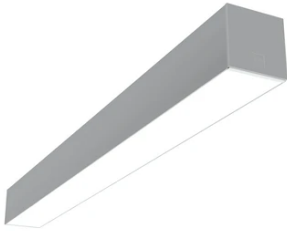


## In-Finity 100 Surface Emergency 3000K General Lighting

### ■ N10SEM3G02B - Anodized Grey

LED modular system for surface installation, including LED luminaires, aluminum installation profile, and diffusers. Drivers included in lighting modules for 220-240V connection to mains or to other lighting modules.



### Main specifications

|                      |         |                    |        |
|----------------------|---------|--------------------|--------|
| <b>Lamp category</b> | LED     | <b>Environment</b> | Indoor |
| <b>Power (W)</b>     | 25.5W/m |                    |        |
| <b>CCT (K)</b>       | 3000K   |                    |        |
| <b>CRI</b>           | 80      |                    |        |
| <b>Mountings</b>     | Surface |                    |        |

### Optical

|                           |                |
|---------------------------|----------------|
| <b>Lighting type</b>      | Direct         |
| <b>LED type</b>           | Top LED        |
| <b>Light distribution</b> | Symmetric      |
| <b>Optical type</b>       | Diffused light |

### Electrical

|                         |            |
|-------------------------|------------|
| <b>Dimmable</b>         | No         |
| <b>Driver</b>           | Integrated |
| <b>Driver type</b>      | Electronic |
| <b>Emergency</b>        | Without    |
| <b>Insulation class</b> | I          |

### Physical

|                    |               |
|--------------------|---------------|
| <b>Color</b>       | Anodized Grey |
| <b>Orientation</b> | Fixed         |
| <b>Length (mm)</b> | 1400          |

### Note

Opal Diffuser: Diffuse, glare free and uniform lighting throughout the room. / Emergency: Emergency Module available in all versions, length 1405 mm. In normal use, it uses the same power consumption as the standard In-Finity. In emergency use, it emits 10% of normal use during 3 hours. Endcaps: must be ordered separately. Consult Flos Architectural team for a configuration without end caps.

### Certification / Marking

