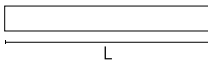
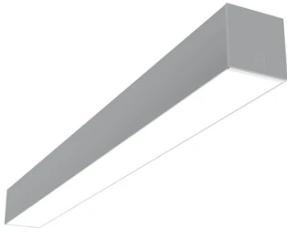


In-Finity 100 Surface 4000K Micro-Prismatic Diffuser Dali

■ N10S144U02BDA - Anodized Grey

LED modular system for surface installation, including LED luminaires, aluminum installation profile, and diffusers. Drivers included in lighting modules for 220-240V connection to mains or to other lighting modules.

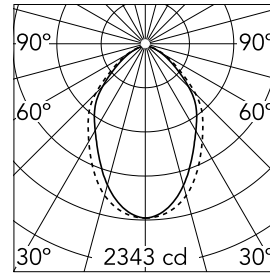


Main specifications

Lamp category	LED	Mountings	Surface
Power (W)	25.5W/m	Environment	Indoor dry location
CCT (K)	4000K		
CRI	80		
Net lumen (lm)	3958		

Optical

Lighting type	Direct
LED type	Top LED
Light distribution	Symmetric
Optical type	Diffused light
Beam angle (°)	73
Beam angle C90-270 (°)	81



Beam Angle:	73°		
h(m)	E(lx)	D(m)	
1	2343	1.47	
2	586	2.95	
3	260	4.42	
4	146	5.90	
5	94	7.37	

Luminous flux luminaire
3958 lm

Electrical

Frequency (Hz)	50/60	Insulation class	I
Dimmable	Yes		
Driver	Integrated		
Driver type	Dimmable DALI		
	1		
Emergency	Without		

Physical

Color	Anodized Grey
Orientation	Fixed
Weight (kg)	11
Length (mm)	1405

Note

Micro-Prismatic Diffuser: Highly efficient multilayer diffuser that, thanks to its unique micro-prismatic texture, provides a glare free UGR<19 light beam. / Emergency: Emergency Module available in all versions, length 1405 mm. In normal use, it uses the same power consumption as the standard In-Finity. In emergency use, it emits 10% of normal use during 3 hours. Endcaps: must be ordered separately. Consult Flos Architectural team for a configuration without end caps.

