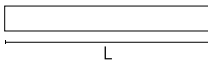
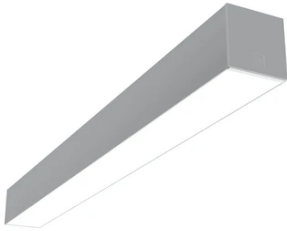


## In-Finity 100 Surface 4000K Micro-Prismatic Diffuser Dali

### ■ N10S084U02BDA - Anodized Grey

LED modular system for surface installation, including LED luminaires, aluminum installation profile, and diffusers. Drivers included in lighting modules for 220-240V connection to mains or to other lighting modules.

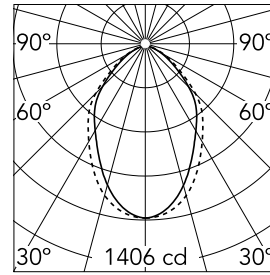


### Main specifications

<b>Lamp category</b>	LED	<b>Mountings</b>	Surface
<b>Power (W)</b>	25.5W/m	<b>Environment</b>	Indoor dry location
<b>CCT (K)</b>	4000K		
<b>CRI</b>	80		
<b>Net lumen (lm)</b>	2375		

### Optical

<b>Lighting type</b>	Direct
<b>LED type</b>	Top LED
<b>Light distribution</b>	Symmetric
<b>Optical type</b>	Diffused light
<b>Beam angle (°)</b>	73
<b>Beam angle C90-270 (°)</b>	81



<b>Beam Angle:</b>	73°		
<b>h(m)</b>	<b>E(lx)</b>	<b>D(m)</b>	
1	1406	1.47	
2	351	2.95	
3	156	4.42	
4	88	5.90	
5	56	7.37	

Luminous flux luminaire  
2375 lm

### Electrical

<b>Frequency (Hz)</b>	50/60	<b>Insulation class</b>	I
<b>Dimmable</b>	Yes		
<b>Driver</b>	Integrated		
<b>Driver type</b>	Dimmable DALI		
<b>Emergency</b>	Without		

### Physical

<b>Color</b>	Anodized Grey
<b>Orientation</b>	Fixed
<b>Weight (kg)</b>	5
<b>Length (mm)</b>	845

### Note

Micro-Prismatic Diffuser: Highly efficient multilayer diffuser that, thanks to its unique micro-prismatic texture, provides a glare free UGR<19 light beam. / Emergency: Emergency Module available in all versions, length 1405 mm. In normal use, it uses the same power consumption as the standard In-Finity. In emergency use, it emits 10% of normal use during 3 hours. Endcaps: must be ordered separately. Consult Flos Architectural team for a configuration without end caps.



## In-Finity 100 Surface 4000K Micro-Prismatic Diffuser Dali



5



5

Metal End Cap. Recessed No Trim / Surface / Suspension Down. 100 mm (Colour Black)  
08.9054.NS

500 mm micro-prismatic diffuser. Highly efficient multilayer diffuser that, thanks to its unique microprismatic texture, provides a glare free UGR<19 light beam  
08.0114.00

Metal End Cap. Recessed No Trim / Surface / Suspension Down. 100 mm (Colour Anodized Grey)  
08.9054.02



5



5

Metal End Cap. Recessed No Trim / Surface / Suspension Down. 100 mm (Colour White)  
08.9054.40

Metal cover. Surface / Suspension Down. 100 mm  
08.9054.06