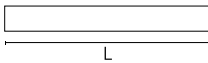
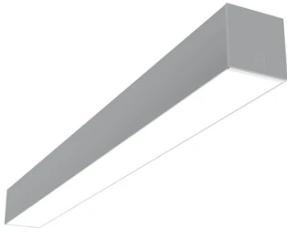


In-Finity 100 Surface 3000K General Lighting Dali

■ N10S253G02BDA - Anodized Grey

LED modular system for surface installation, including LED luminaires, aluminum installation profile, and diffusers. Drivers included in lighting modules for 220-240V connection to mains or to other lighting modules.

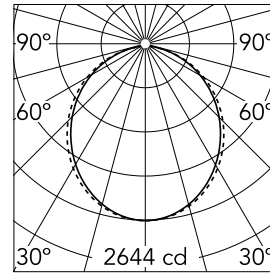


Main specifications

Lamp category	LED	Mountings	Surface
Power (W)	25.5W/m	Environment	Indoor
CCT (K)	3000K		
CRI	80		
Net lumen (lm)	7001		

Optical

Lighting type	Direct
LED type	Top LED
Light distribution	Symmetric
Optical type	Diffused light
Beam angle (°)	103
Beam angle C90-270 (°)	107



Beam Angle: 103°

h(m)	E(lx)	D(m)
1	2644	2.54
2	661	5.07
3	294	7.61
4	165	10.14
5	106	12.68

Luminous flux luminaire
7001 lm

Electrical

Frequency (Hz)	50/60
Dimmable	Yes
Driver	Integrated
Emergency	Without
Insulation class	I

Physical

Color	Anodized Grey
Orientation	Fixed
Weight (kg)	18.80
Length (mm)	2530

Note

Opal Diffuser: Diffuse, glare free and uniform lighting throughout the room. / Emergency: Emergency Module available in all versions, length 1405 mm. In normal use, it uses the same power consumption as the standard In-Finity. In emergency use, it emits 10% of normal use during 3 hours. Endcaps: must be ordered separately. Consult Flos Architectural team for a configuration without end caps.

Certification / Marking

