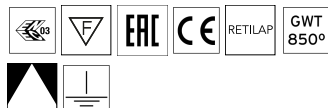
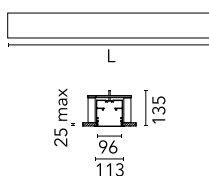
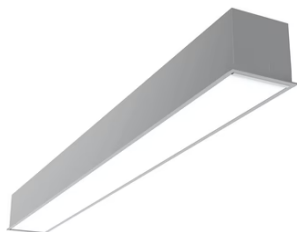


In-Finity 100 Recessed Trim 4000K Micro-Prismatic Diffuser Dali

■ N10T254U02BDA - Anodized Grey

LED modular system for recessed Trim installation, including LED luminaires, aluminum installation profile and diffusers. Drivers included in lighting modules for 220-240V connection to mains or to other lighting modules.

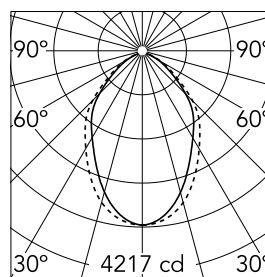


Main specifications

Lamp category	LED	Mountings	Recessed
Power (W)	25.5W/m	Environment	Indoor dry location
CCT (K)	4000K		
CRI	80		
Net lumen (lm)	7125		

Optical

Lighting type	Direct
LED type	Top LED
Light distribution	Symmetric
Optical type	Diffused light
Beam angle (°)	73
Beam angle C90-270 (°)	81



Luminous flux luminaire
7125 lm

Beam Angle: 73°

h(m) E(lx) D(m)

1 4217 1.47

2 1054 2.95

3 469 4.42

4 264 5.90

5 169 7.37

Electrical

Frequency (Hz)	50/60	Insulation class	I
Dimmable	Yes		
Driver	Integrated		
Driver type	Dimmable DALI		
	1		
Emergency	Without		

Physical

Color	Anodized Grey
Orientation	Fixed
Recessed depth (mm)	135
Weight (kg)	18.80
Length (mm)	2530

Note

Micro-Prismatic Diffuser: Highly efficient multilayer diffuser that, thanks to its unique micro-prismatic texture, provides a glare free UGR<19 light beam. / Emergency: Emergency Module available in all versions, length 1405 mm. In normal use, it uses the same power consumption as the standard In-Finity. In emergency use, it emits 10% of normal use during 3 hours. Endcaps: must be ordered separately. Consult Flos Architectural team for a configuration without end caps.

In-Finity 100 Recessed Trim 4000K Micro-Prismatic Diffuser Dali



5

Metal cover. Recessed Trim. 100 mm
(Colour Anodized Grey)
08.9055.02



5

Metal cover. Recessed Trim. 100 mm
(Colour White)
08.9055.40



5

Metal cover. Recessed Trim. 100 mm
(Colour Black)
08.9055.NS



500 mm micro-prismatic diffuser.
Highly efficient multilayer diffuser
that, thanks to its unique
microprismatic texture, provides a
glare free UGR<19 light beam
08.0114.00