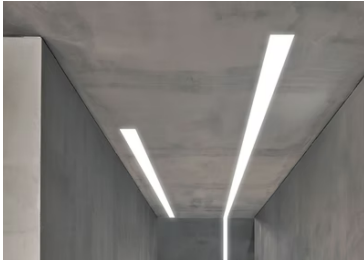
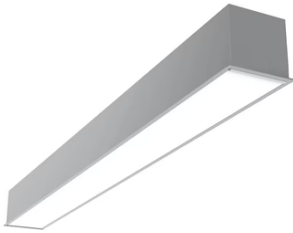


In-Finity 100 Recessed Trim 4000K General Lighting Dali

■ N10T054G02BDA - Anodized Grey

LED modular system for recessed Trim installation, including LED luminaires, aluminum installation profile and diffusers. Drivers included in lighting modules for 220-240V connection to mains or to other lighting modules.

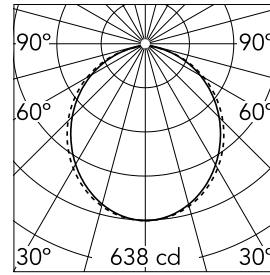


Main specifications

Lamp category	LED	Mountings	Recessed
Power (W)	25.5W/m	Environment	Indoor dry location
CCT (K)	4000K		
CRI	80		
Net lumen (lm)	1689		

Optical

Lighting type	Direct
LED type	Top LED
Light distribution	Symmetric
Optical type	Diffused light
Beam angle (°)	103
Beam angle C90-270 (°)	107



Beam Angle: 103°

h(m)	E(lx)	D(m)
1	638	2.54
2	160	5.07
3	71	7.61
4	40	10.14
5	26	12.68

Luminous flux luminaire
1689 lm

Electrical

Frequency (Hz)	50/60	Insulation class	I
Dimmable	Yes		
Driver	Integrated		
Driver type	Dimmable DALI		
	1		
Emergency	Without		

Physical

Color	Anodized Grey
Orientation	Fixed
Recessed depth (mm)	135
Weight (kg)	4
Length (mm)	565

Note

Opal Diffuser: Diffuse, glare free and uniform lighting throughout the room. / Emergency: Emergency Module available in all versions, length 1405 mm. In normal use, it uses the same power consumption as the standard In-Finity. In emergency use, it emits 10% of normal use during 3 hours. Endcaps: must be ordered separately. Consult Flos Architectural team for a configuration without end caps.

In-Finity 100 Recessed Trim 4000K General Lighting Dali



5



5

Metal cover. Recessed Trim. 100 mm
(Colour Black)
08.9055.NS

500 mm opal diffuser. Diffuse, glare
free and uniform lighting throughout
the room
08.0111.00

Metal cover. Recessed Trim. 100 mm
(Colour Anodized Grey)
08.9055.02



5

Metal cover. Recessed Trim. 100 mm
(Colour White)
08.9055.40