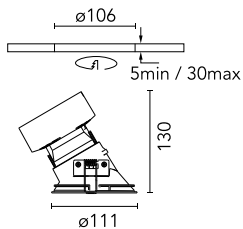
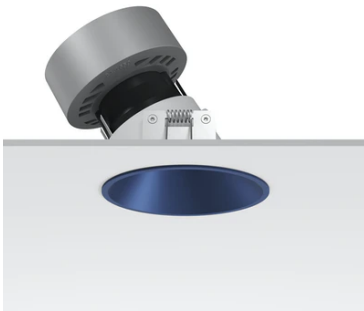


Easy Kap Ø 105 Wall-Washer

■ 05.7020.BU - Blue

Recessed luminaire with LED light source. Remote electronic transformer 220/240V not included. Installation frame not necessary.

Recessed luminaire with LED light source. Remote electronic transformer 220/240V not included. Installation frame not necessary.



Main specifications

Number of heads	1	CRI	90
Lamp category	LED	Mountings	Ceiling recessed
Power (W)	23W	Environment	Indoor dry location
System power (W)	25.9		
CCT (K)	2700K		

Optical

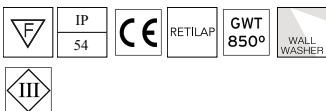
Lighting type	Direct	Beam angle C90-270	34
LED type	LED array	(°)	
Light distribution	Asymmetric		
Optical type	Wall-washer		
Beam angle (°)	26		

Electrical

Voltage (V)	34	Emergency	Without
Current (mA)	650	Insulation class	III
Dimmable	Yes		
Driver	Remote excluded		
Driver type	Non Dimmable, Dimmable DALI 2, Dimmable Casambi, Dimmable 1-10V		

Physical

Color	Blue	Spot diameter (mm)	111
Orientation	Fixed		
Trim	yes		
Recessed depth (mm)	134		
Weight (kg)	0,53		



Easy Kap Ø 105 Wall-Washer



Non dimmable continuous current power supply. 15-30W, 220/240V -50/60Hz with power current selected through adjustable switch. 350mA – 15W / 400mA – 17W / 450mA – 19W / 500mA – 22W / 550mA – 24W / 600mA – 26W / 650mA – 28W / 700mA – 30W no regulable
60.9592



Continuous current power supply, 0/1-10V dimmable, 220/240V – 50/60Hz, 300mA-16W / 350mA-18W / 400mA-21W / 500mA-27W / 600mA-32W / 650mA-35W / 700/750/800/900/950/1000/1050mA-36W
60.9439



Continuous current supply source 240V – 50/60Hz with dimmable DALI 2, push dimming. 300mA-16W / 350mA-18W / 400mA-21W / 500mA-27W / 600mA-32W / 650mA-35W
700/750/800/900/950/1000/1050mA-38W
60.9186



Continuous current power supply, dimmable Casambi 220/240V-50/60Hz, 300mA-16W / 350mA-18,5W / 400mA-21,5W / 450mA-24W / 500mA-27W / 600mA-32W / 650mA-35W / 700mA-36W / 750/800/900/950/1000/1050/1200mA – 38W
60.9207