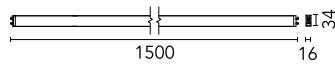
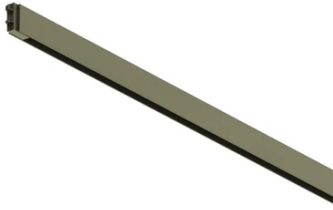


Diversion Up&Down. L 1500 mm

09.8012.CZ - Bronze

Electro-mechanical profile for indoor application with integrated direct and indirect linear light element for surface or suspended installation. With lengths varying from 1 to 2.5m (distance between ball joint centers). Fixation by fed suspension kit and suspended by a joint. Power kit and mechanical joint must be ordered separately. System controlled by 1-10V driver, DALI...

Electro-mechanical profile for indoor application with integrated direct and indirect linear light element for surface or suspended installation. With lengths varying from 1 to 2.5m (distance between ball joint centers). Fixation by fed suspension kit and suspended by a joint. Power kit and mechanical joint must be ordered separately. System controlled by 1-10V driver, DALI or Casambi. Broadcast control system. Dimmer not included.

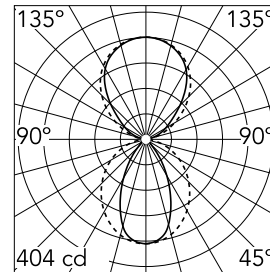


Main specifications

| | | | |
|-----------------------|-------|--------------------|------------------------|
| Lamp category | LED | Mountings | Surface and suspension |
| Power (W) | 32.5W | Environment | Indoor dry location |
| CCT (K) | 2700K | | |
| CRI | 90 | | |
| Net lumen (lm) | 1514 | | |

Optical

| | |
|-------------------------------|------------------|
| Lighting type | Indirect, Direct |
| LED type | Top LED |
| Light distribution | Symmetric |
| Optical type | Diffused light |
| Beam angle (°) | 54 |
| Beam angle C90-270 (°) | 102 |
| Efficiency (lm/W) | 47 |



| | | |
|--------------------|--------------|-------------|
| Beam Angle: | 54° | |
| h(m) | E(lx) | D(m) |
| 1 | 404 | 1.01 |
| 2 | 101 | 2.02 |
| 3 | 45 | 3.03 |
| 4 | 25 | 4.04 |
| 5 | 16 | 5.06 |

Luminous flux luminaire
1513 lm

Electrical

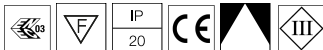
| | | | |
|--------------------|---|-------------------------|-----|
| Voltage (V) | 24.00 | Insulation class | III |
| Dimmable | Yes | | |
| Driver | Remote excluded | | |
| Driver type | Non Dimmable, Dimmable Casambi, Dimmable 1-10V, Dimmable DALI 1 | | |
| Emergency | Without | | |

Physical

| | |
|--------------------|--------|
| Color | Bronze |
| Orientation | Fixed |
| Weight (kg) | 0.85 |
| Length (mm) | 1500 |

Note

PWM voltage output dimmable drivers shall be used at frequencies between 250 and 500Hz. In the case of the version without Spots, drivers with higher switching frequency, up to 2Khz, can be used. The profile's length measurement corresponds to the distance between the centers of the suspension joints. To install a profile of length L, the distance between joints coincides with the indicated measurement L, but the profile is a few centimeters smaller.



Diversion Up&Down. L 1500 mm



Casambi Controller 220-240V. Remote Installation
60.9392

Feed recessed joint. 24V
06.5304.CZ

Surface feed box for ceiling installation. 24V. Driver included
CASAMBI / 57W
06.5313.CZ



Feed suspension joint. 24V
06.5300.CZ

Feed recessed joint rose. 24V.
06.5306.CZ

Feed suspension joint with rose for recessing. 24V
06.5302.CZ



24V Remote power supply. Dimmable through 1/10V protocol or Non Dimmable. 57W 220/240V
60.9361

24V Remote power supply. Dimmable through 1/10V protocol. 120W 110/240V
60.9416

Recessed/surface joint
06.5305.CZ



24V Remote power supply. Dimmable through DALI protocol. 120W 110/240V
60.9426



Surface feed box for ceiling installation. 24V. Driver included 1-10V / 57W
06.5312.CZ



Suspension feed box for surface installation. 24V. Driver included Casambi / 57W
06.5311.CZ



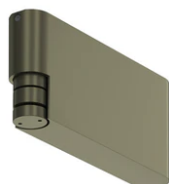
Suspension feed box for surface installation. 24V. Driver included 1-10V / 57W
06.5310.CZ



Suspension joint for surface installation
06.5303.CZ



Suspension feed box for surface installation. 24V. Driver included DALI / 57W
06.5314.CZ



Surface feed box for ceiling installation. 24V. Driver included DALI / 57W
06.5315.CZ



Suspension joint
06.5301.CZ