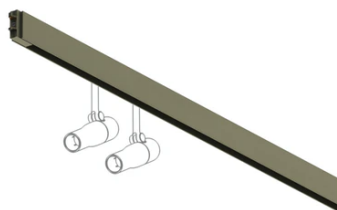


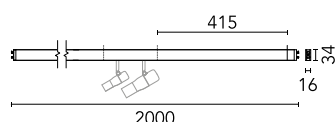
Diversion Up&Down + Spots. L 2000 mm

09.8034.CZ - Bronze



Electro-mechanical profile for indoor application with integrated direct linear light element and space for two spots, for surface or suspended installation. With lengths varying from 1 to 2.5m (distance between ball joint centers). Fixation by fed suspension kit and suspended by a joint. Power kit and mechanical joint must be ordered separately. System controlled by...

Electro-mechanical profile for indoor application with integrated direct linear light element and space for two spots, for surface or suspended installation. With lengths varying from 1 to 2.5m (distance between ball joint centers). Fixation by fed suspension kit and suspended by a joint. Power kit and mechanical joint must be ordered separately. System controlled by 1-10V driver, DALI or Casambi. Broadcast control system. Dimmer not included. For single profile structures, suspended version, balance the spot to avoid profile tilting.

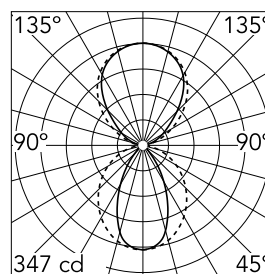


Main specifications

Lamp category	LED	Mountings	Surface and suspension
Power (W)	41W	Environment	Indoor dry location
CCT (K)	2700K		
CRI	90		
Net lumen (lm)	1298		

Optical

Lighting type	Indirect, Direct
LED type	Top LED
Light distribution	Symmetric
Optical type	Diffused light
Beam angle (°)	54
Beam angle C90-270 (°)	102
Efficiency (lm/W)	32



Beam Angle:	54°	
h(m)	E(lx)	D(m)
1	347	1.01
2	87	2.02
3	39	3.03
4	22	4.04
5	14	5.06

Luminous flux luminaire
1298 lm



Electrical

Voltage (V)	24.00	Insulation class	III
Dimmable	Yes		
Driver	Remote excluded		
Driver type	Non Dimmable, Dimmable, Casambi, Dimmable 1-10V, Dimmable DALI 1		
Emergency	Without		

Physical

Color	Bronze
Orientation	Fixed
Weight (kg)	1.14
Length (mm)	2000

Note

Max. 2 spots not included.

PWM voltage output dimmable drivers shall be used at frequencies between 250 and 500Hz.

In the case of the version without Spots, drivers with higher switching frequency, up to 2Khz, can be used.

The profile's length measurement corresponds to the distance between the centers of the suspension joints. To install a profile of length L, the distance between joints coincides with the indicated measurement L, but the profile is a few centimeters smaller.

Diversion Up&Down + Spots. L 2000 mm



Recessed/surface joint
06.5305.CZ



Feed suspension joint with rose for
recessing. 24V
06.5302.CZ



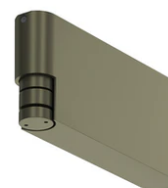
Feed recessed joint rose. 24V.
06.5306.CZ



Feed recessed joint. 24V
06.5304.CZ



Suspension feed box for surface
installation. 24V. Driver included DALI /
57W
06.5314.CZ



Surface feed box for ceiling
installation. 24V. Driver included DALI /
57W
06.5315.CZ



Suspension joint for surface
installation
06.5303.CZ



Suspension feed box for surface
installation. 24V. Driver included
Casambi / 57W
06.5311.CZ



Suspension feed box for surface
installation. 24V. Driver included 1-10V
/ 57W
06.5310.CZ



24V Remote power supply. Dimmable through 1/10V protocol or Non Dimmable. 57W 220/240V
60.9361



24V Remote power supply. Dimmable through DALI protocol. 120W 110/240V
60.9426



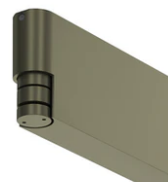
Casambi Controller 220-240V. Remote Installation
60.9392



24V Remote power supply. Dimmable through 1/10V protocol. 120W 110/240V
60.9416



Suspension joint
06.5301.CZ



Surface feed box for ceiling installation. 24V. Driver included 1-10V / 57W
06.5312.CZ



Feed suspension joint. 24V
06.5300.CZ



Surface feed box for ceiling installation. 24V. Driver included CASAMBI / 57W
06.5313.CZ