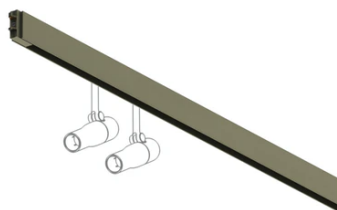


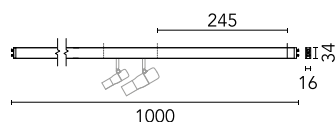
Diversion Up&Down + Spots. L 1000 mm

09.8031.CZ - Bronze



Electro-mechanical profile for indoor application with integrated direct linear light element and space for two spots, for surface or suspended installation. With lengths varying from 1 to 2.5m (distance between ball joint centers). Fixation by fed suspension kit and suspended by a joint. Power kit and mechanical joint must be ordered separately. System controlled by...

Electro-mechanical profile for indoor application with integrated direct linear light element and space for two spots, for surface or suspended installation. With lengths varying from 1 to 2.5m (distance between ball joint centers). Fixation by fed suspension kit and suspended by a joint. Power kit and mechanical joint must be ordered separately. System controlled by 1-10V driver, DALI or Casambi. Broadcast control system. Dimmer not included. For single profile structures, suspended version, balance the spot to avoid profile tilting.

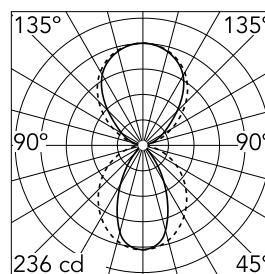


Main specifications

| | | | |
|-----------------------|-------|--------------------|------------------------|
| Lamp category | LED | Mountings | Surface and suspension |
| Power (W) | 18W | Environment | Indoor dry location |
| CCT (K) | 3000K | | |
| CRI | 90 | | |
| Net lumen (lm) | 883 | | |

Optical

| | |
|-------------------------------|------------------|
| Lighting type | Indirect, Direct |
| LED type | Top LED |
| Light distribution | Symmetric |
| Optical type | Diffused light |
| Beam angle (°) | 54 |
| Beam angle C90-270 (°) | 102 |
| Efficiency (lm/W) | 49 |



| | | |
|-------------|-------|------|
| Beam Angle: | 54° | |
| h(m) | E(lx) | D(m) |
| 1 | 236 | 1.01 |
| 2 | 59 | 2.02 |
| 3 | 26 | 3.03 |
| 4 | 15 | 4.04 |
| 5 | 9 | 5.06 |

Luminous flux luminaire
883 lm



Electrical

| | | | |
|--------------------|--|-------------------------|-----|
| Voltage (V) | 24.00 | Insulation class | III |
| Dimmable | Yes | | |
| Driver | Remote excluded | | |
| Driver type | Non Dimmable, Dimmable, Casambi, Dimmable 1-10V, Dimmable DALI 1 | | |
| Emergency | Without | | |

Physical

| | |
|--------------------|--------|
| Color | Bronze |
| Orientation | Fixed |
| Weight (kg) | 0.56 |
| Length (mm) | 1000 |

Note

Max. 2 spots not included.

PWM voltage output dimmable drivers shall be used at frequencies between 250 and 500Hz.

In the case of the version without Spots, drivers with higher switching frequency, up to 2Khz, can be used.

The profile's length measurement corresponds to the distance between the centers of the suspension joints. To install a profile of length L, the distance between joints coincides with the indicated measurement L, but the profile is a few centimeters smaller.

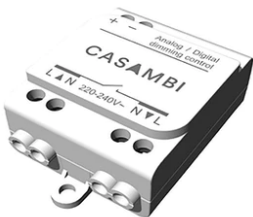
Diversion Up&Down + Spots. L 1000 mm



Suspension feed box for surface installation. 24V. Driver included DALI / 57W
06.5314.CZ



Surface feed box for ceiling installation. 24V. Driver included DALI / 57W
06.5315.CZ



Casambi Controller 220-240V. Remote Installation
60.9392



Feed recessed joint rose. 24V.
06.5306.CZ



Suspension feed box for surface installation. 24V. Driver included 1-10V / 57W
06.5310.CZ



Suspension joint
06.5301.CZ



Suspension feed box for surface installation. 24V. Driver included Casambi / 57W
06.5311.CZ



Suspension joint for surface installation
06.5303.CZ



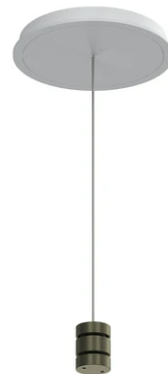
Feed recessed joint. 24V
06.5304.CZ



24V Remote power supply. Dimmable through 1/10V protocol. 120W 110/240V 60.9416



Recessed/surface joint 06.5305.CZ



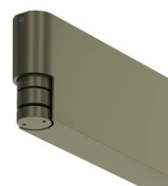
Feed suspension joint with rose for recessing. 24V 06.5302.CZ



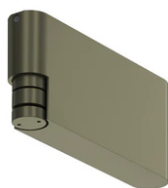
Feed suspension joint. 24V 06.5300.CZ



24V Remote power supply. Dimmable through DALI protocol. 120W 110/240V 60.9426



Surface feed box for ceiling installation. 24V. Driver included CASAMBI / 57W 06.5313.CZ



Surface feed box for ceiling installation. 24V. Driver included 1-10V / 57W 06.5312.CZ



24V Remote power supply. Dimmable through 1/10V protocol or Non Dimmable. 57W 220/240V 60.9361