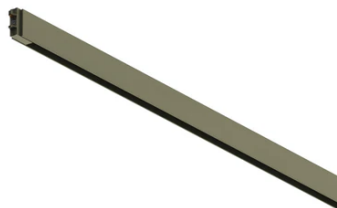


Diversion Down. L 1000 mm

09.8001.CZ - Bronze



Electro-mechanical profile for indoor application with integrated direct linear light element for surface or suspended installation. With lengths varying from 1 to 2.5m (distance between ball joint centers). Fixation by a joint with power kit. Power kit and mechanical joint must be ordered separately. System controlled by 1-10V driver, DALI or Casambi. Broadcast control system....

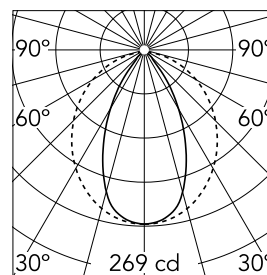
Electro-mechanical profile for indoor application with integrated direct linear light element for surface or suspended installation. With lengths varying from 1 to 2.5m (distance between ball joint centers). Fixation by a joint with power kit. Power kit and mechanical joint must be ordered separately. System controlled by 1-10V driver, DALI or Casambi. Broadcast control system. Dimmer not included.

Main specifications

Lamp category	LED	Mountings	Surface and suspension
Power (W)	14W	Environment	Indoor dry location
CCT (K)	3000K		
CRI	90		
Net lumen (lm)	398		

Optical

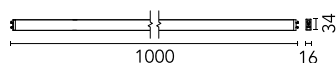
Lighting type	Direct
LED type	Top LED
Light distribution	Symmetric
Optical type	Diffused light
Beam angle (°)	54
Beam angle C90-270 (°)	102
Efficiency (lm/W)	30



Beam Angle: 54°

h(m)	E(lx)	D(m)
1	269	1.01
2	67	2.02
3	30	3.03
4	17	4.04
5	11	5.06

Luminous flux luminaire
398 lm



Electrical

Voltage (V)	24.00	Insulation class	III
Dimmable	Yes		
Driver	Remote excluded		
Driver type	Non Dimmable, Dimmable Casambi, Dimmable 1-10V, Dimmable DALI 1		
Emergency	Without		

Physical

Color	Bronze
Orientation	Fixed
Weight (kg)	0.56
Length (mm)	1000

Note

PWM voltage output dimmable drivers shall be used at frequencies between 250 and 500Hz. In the case of the version without Spots, drivers with higher switching frequency, up to 2Khz, can be used. The profile's length measurement corresponds to the distance between the centers of the suspension joints. To install a profile of length L, the distance between joints coincides with the indicated measurement L, but the profile is a few centimeters smaller.



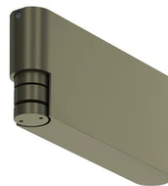
Diversion Down. L 1000 mm



Surface feed box for ceiling installation. 24V. Driver included CASAMBI / 57W
06.5313.CZ

24V Remote power supply. Dimmable through DALI protocol. 120W 110/240V
60.9426

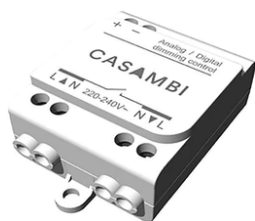
24V Remote power supply. Dimmable through 1/10V protocol. 120W 110/240V
60.9416



Suspension feed box for surface installation. 24V. Driver included 1-10V / 57W
06.5310.CZ

Suspension feed box for surface installation. 24V. Driver included Casambi / 57W
06.5311.CZ

Surface feed box for ceiling installation. 24V. Driver included 1-10V / 57W
06.5312.CZ



Casambi Controller 220-240V. Remote Installation
60.9392

Suspension joint for surface installation
06.5303.CZ

Feed suspension joint with rose for recessing. 24V
06.5302.CZ



Feed recessed joint. 24V
06.5304.CZ



Feed suspension joint. 24V
06.5300.CZ



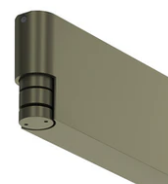
Feed recessed joint rose. 24V.
06.5306.CZ



24V Remote power supply. Dimmable through 1/10V protocol or Non Dimmable. 57W 220/240V
60.9361



Suspension feed box for surface installation. 24V. Driver included DALI / 57W
06.5314.CZ



Surface feed box for ceiling installation. 24V. Driver included DALI / 57W
06.5315.CZ



Recessed/surface joint
06.5305.CZ



Suspension joint
06.5301.CZ