

## Compass Spot For Ceiling Vertical Gear Box

03.3305.30 - Matt White

Spotlight to be installed on ceiling. Electronic transformer integrated 220/240V – 12V, 50/60Hz. Dimmerable from 10% to 100% of full output using built-in potentiometer. LED power supply indicator.

### Main specifications

Number of heads	1
Lamp category	Halogen
Power (W)	100W Max.
Mountings	Ceiling surface
Environment	Indoor dry location

### Optical

Lighting type	Direct
Lamp type	QR-111
Light distribution	Symmetric
Optical type	Spot
Beam angle (°)	4

### Electrical

Frequency (Hz)	50/60	Emergency	Without
Lamp holder	G53	Insulation class	I
Dimmable	Yes		
Driver	Integrated		
Driver type	Electronic 12V		

### Physical

Color	Matt White
Orientation	Adjustable
Weight (kg)	0.95
Tilt (°)	110
Rotation (°)	360

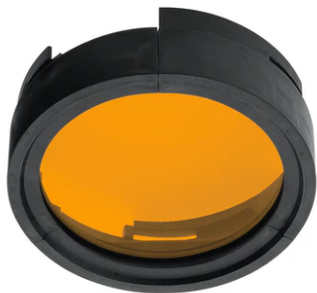
Compass Spot For Ceiling Vertical Gear Box



Elliptical light distribution lens  
08.8930.68



I.R. filter  
08.8933.68



Amber filter  
08.8932.66.OD



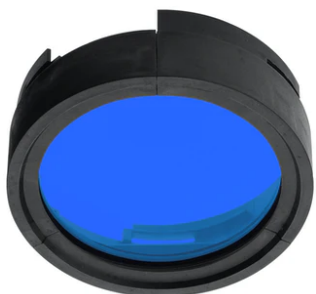
Daylight filter  
08.8932.DL



Hot Light  
08.8932.69



Screening cylinder  
08.8034.14



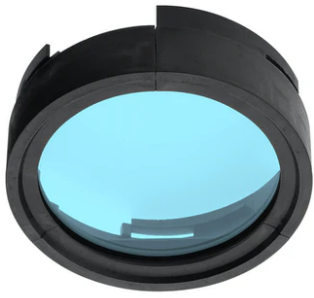
Blue filter  
08.8932.64.OD



U.V. filter  
08.8932.98.OD



Neodimium  
08.8932.ND



---

Sky blue filter  
08.8932.65.OD



---

Flood lens made in press glass  
08.8931.68



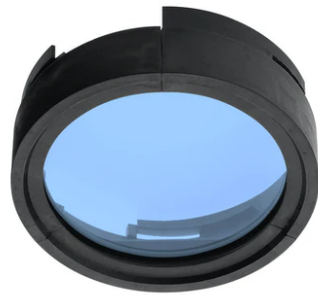
---

Honeycomb  
08.8036.14



---

Red filter  
08.8932.67.OD



---

Cold light filter  
08.8932.CL