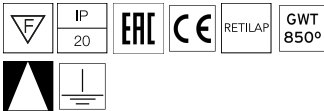
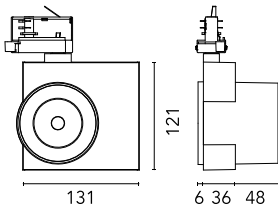
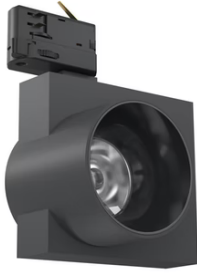


Camera 90 GA-69 Casambi integrated

New

09.8214.DR.CB - Anthracite

Spotlight to be installed on 3-phase track with LED light source. 220- 240V, 50-60Hz power supply integrated.

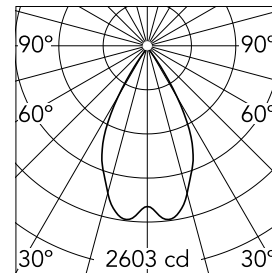


Main specifications

| | | | |
|------------------------|-------|-----------------------|---------------------|
| Number of heads | 1 | Net lumen (lm) | 2298 |
| Lamp category | LED | Mountings | Track GA |
| Power (W) | 32W | Environment | Indoor dry location |
| CCT (K) | 3000K | | |
| CRI | 97 | | |

Optical

| | |
|-------------------------------|------------|
| Lighting type | Direct |
| LED type | LED array |
| Light distribution | Symmetric |
| Optical type | Wide flood |
| Beam angle (°) | 56 |
| Beam angle C90-270 (°) | 56 |
| UGRL | 18 |
| Efficiency (lm/W) | 71.81 |



Beam Angle: 55°

| h(m) | E(lx) | D(m) |
|------|-------|------|
| 1 | 2603 | 1.05 |
| 2 | 651 | 2.09 |
| 3 | 289 | 3.14 |
| 4 | 163 | 4.19 |
| 5 | 104 | 5.24 |

Luminous flux luminaire
2298 lm

Electrical

| | | | |
|-----------------------|---------------------|-------------------------|---------|
| Frequency (Hz) | 50/60 | Emergency | Without |
| Voltage (V) | 220-240 | Insulation class | I |
| Dimmable | Yes | | |
| Driver | Integrated | | |
| Driver type | Dimmable Casambi | | |

Physical

| | | | |
|---------------------|------------|---------------------------|-----|
| Color | Anthracite | Spot diameter (mm) | 90 |
| Orientation | Adjustable | Length (mm) | 131 |
| Weight (kg) | 0.75 | | |
| Tilt (°) | 90 | | |
| Rotation (°) | 360 | | |

Note

The control system with the Casambi version of light fixtures is directly and individually regulated wirelessly using the application FLOS Control® by Casambi.
Preliminary photometry.

Camera 90 GA-69 Casambi integrated



Honeycomb
08.0178.14