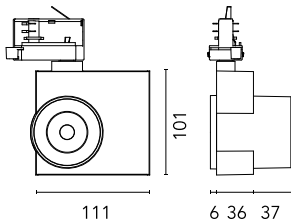


Camera 60 GA-69 Non Dimmable

New

09.8115.WA - Textured White

Spotlight to be installed on 3-phase track with LED light source. 220- 240V, 50-60Hz power supply integrated.

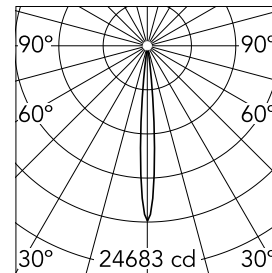


Main specifications

Number of heads	1	Net lumen (lm)	774
Lamp category	LED	Mountings	Track GA
Power (W)	12W	Environment	Indoor dry location
CCT (K)	3500K		
CRI	97		

Optical

Lighting type	Direct
LED type	LED array
Light distribution	Symmetric
Optical type	Super spot
Beam angle (°)	9
Beam angle C90-270 (°)	9



Beam Angle:	9°	
	h(m)	E(lx) D(m)
	1	24683 0.16
	2	6171 0.32
	3	2743 0.48
	4	1543 0.63
	5	987 0.79

Luminous flux luminaire
774 lm

Electrical

Frequency (Hz)	50/60	Insulation class	I
Dimmable	No		
Driver	Integrated		
Driver type	Non Dimmable		
Emergency	Without		

Physical

Color	Textured White	Spot diameter (mm)	60
Orientation	Adjustable	Length (mm)	111
Weight (kg)	0.57		
Tilt (°)	90		
Rotation (°)	360		

Camera 60 GA-69 Non Dimmable



Honeycomb
08.0175.14