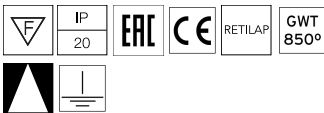
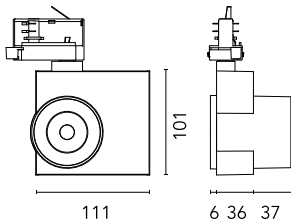
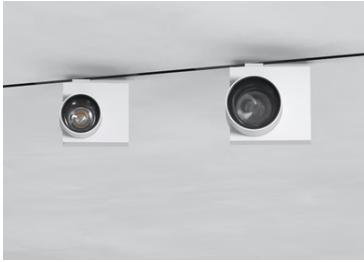


## Camera 60 GA-69 Casambi integrated

New

09.8119.WA.CB - Textured White

Spotlight to be installed on 3-phase track with LED light source. 220- 240V, 50-60Hz power supply integrated.

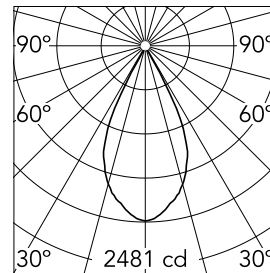


### Main specifications

<b>Number of heads</b>	1	<b>Net lumen (lm)</b>	1371
<b>Lamp category</b>	LED	<b>Mountings</b>	Track GA
<b>Power (W)</b>	20W	<b>Environment</b>	Indoor dry location
<b>CCT (K)</b>	3500K		
<b>CRI</b>	97		

### Optical

<b>Lighting type</b>	Direct
<b>LED type</b>	LED array
<b>Light distribution</b>	Symmetric
<b>Optical type</b>	Wide flood
<b>Beam angle (°)</b>	50
<b>Beam angle C90-270 (°)</b>	50
<b>UGRL</b>	9
<b>Efficiency (lm/W)</b>	68.55



Beam Angle: 50°

h(m)	E(lx)	D(m)
1	2481	0.94
2	620	1.89
3	276	2.83
4	155	3.77
5	99	4.72

Luminous flux luminaire  
1371 lm

### Electrical

<b>Frequency (Hz)</b>	50/60	<b>Emergency</b>	Without
<b>Voltage (V)</b>	220-240	<b>Insulation class</b>	I
<b>Dimmable</b>	Yes		
<b>Driver</b>	Integrated		
<b>Driver type</b>	Dimmable Casambi		

### Physical

<b>Color</b>	Textured White	<b>Spot diameter (mm)</b>	60
<b>Orientation</b>	Adjustable	<b>Length (mm)</b>	111
<b>Weight (kg)</b>	0.57		
<b>Tilt (°)</b>	90		
<b>Rotation (°)</b>	360		

### Note

The control system with the Casambi version of light fixtures is directly and individually regulated wirelessly using the application FLOS Control® by Casambi.

## Camera 60 GA-69 Casambi integrated



---

Honeycomb  
08.0176.14