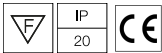
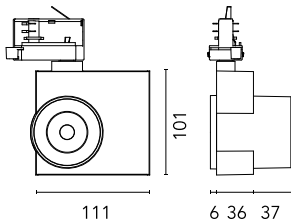


## Camera 60 GA-69 Casambi integrated

New

### 09.8115.DR.CB - Anthracite

Spotlight to be installed on 3-phase track with LED light source. 220- 240V, 50-60Hz power supply integrated.

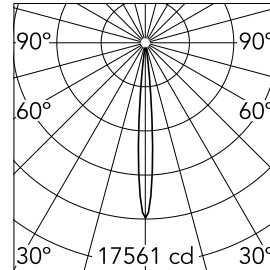


### Main specifications

<b>Number of heads</b>	1	<b>Net lumen (lm)</b>	544
<b>Lamp category</b>	LED	<b>Mountings</b>	Track GA
<b>Power (W)</b>	12W	<b>Environment</b>	Indoor
<b>CCT (K)</b>	3500K		
<b>CRI</b>	97		

### Optical

<b>Lighting type</b>	Direct
<b>LED type</b>	LED array
<b>Light distribution</b>	Symmetric
<b>Optical type</b>	Super spot
<b>Beam angle (°)</b>	9
<b>Beam angle C90-270 (°)</b>	9



Beam Angle: 9°

h(m)	E(lx)	D(m)
1	17561	0.16
2	4390	0.32
3	1951	0.48
4	1098	0.64
5	702	0.79

Luminous flux luminaire  
544 lm

### Electrical

<b>Frequency (Hz)</b>	50/60	<b>Insulation class</b>	I
<b>Dimmable</b>	Yes		
<b>Driver</b>	Integrated		
<b>Driver type</b>	Electronic dimmable CASAMBI		
<b>Emergency</b>	Without		

### Physical

<b>Color</b>	Anthracite	<b>Spot diameter (mm)</b>	60
<b>Orientation</b>	Adjustable	<b>Length (mm)</b>	111
<b>Weight (kg)</b>	0.57		
<b>Tilt (°)</b>	90		
<b>Rotation (°)</b>	360		

### Note

The control system with the Casambi version of light fixtures is directly and individually regulated wirelessly using the application FLOS Control® by Casambi.

## Camera 60 GA-69 Casambi integrated



---

Honeycomb  
08.0175.14