

Belt L 3000 mm Dali Version

New

■ 03.8506.GN.DA - Green Leather

Electromechanical profile for interior use with integrated linear lighting for suspended installation available with 2 or 3 m lengths. Installation via suspension straps on the ceiling and remote power kit, to be ordered separately. Up&Down system controlled via DALI or CASAMBI individually and via 1-10V all together (Broadcast).

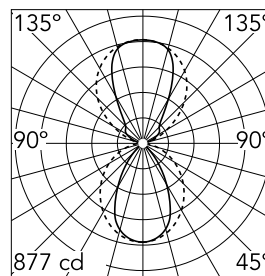
Electromechanical profile for interior use with integrated linear lighting for suspended installation available with 2 or 3 m lengths. Installation via suspension straps on the ceiling and remote power kit, to be ordered separately. Up&Down system controlled via DALI or CASAMBI individually and via 1-10V all together (Broadcast).

Main specifications

| | | | |
|-----------------|-------|----------------|---------------------|
| Number of heads | 1 | Net lumen (lm) | 2872 |
| Lamp category | LED | Mountings | Suspension |
| Power (W) | 83W | Environment | Indoor dry location |
| CCT (K) | 3000K | | |
| CRI | 95 | | |

Optical

| | |
|----------------------------|------------------|
| Lighting type | Indirect, Direct |
| LED type | Top LED |
| Light distribution | Symmetric |
| Optical type | Diffused light |
| Beam angle (°) | 60 |
| Beam angle C90-270 (°) | 100 |
| Beam angle ind (°) | 80 |
| Beam angle ind C90-270 (°) | 90 |



Beam Angle: 60°

| | h(m) | E(lx) | D(m) |
|---|------|-------|------|
| 1 | 877 | 1.16 | |
| 2 | 219 | 2.31 | |
| 3 | 97 | 3.47 | |
| 4 | 55 | 4.63 | |
| 5 | 35 | 5.79 | |

Luminous flux luminaire
2872 lm

Electrical

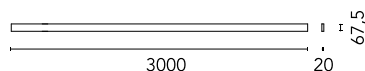
| | |
|------------------|-----------------|
| Driver | Remote excluded |
| Driver type | Dimmable DALI |
| Emergency | Without |
| Insulation class | III |

Physical

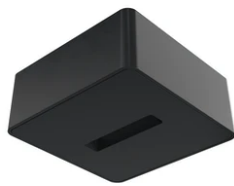
| | |
|-------------|---------------|
| Color | Green Leather |
| Orientation | Fixed |
| Weight (kg) | 3.3 |
| Length (mm) | 3000 |

Note

Power kit and suspension straps sold separately. For the sizing of the installation keep a safety margin of 15% of the maximum power of the LED power source.



Belt L 3000 mm Dali Version



Individual Surface Feed Box
08.0194.00



Suspension strap L 2500 mm
03.8514.GN



LED power supply source for remote
installation, 48V/120W. 220/240 Vac
60.9170



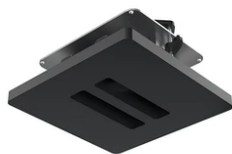
LED Power Supply Source for remote
installation. 48V. 100Vac (150W)-240Vac
(200W)
60.9607



Surface Driver Box 96W – 48V, 110-
240V.
06.0173.14



48-V Power Loop L 1500 mm
03.8520.GN



Double Ceiling Feed Box
08.0181.00



Double Surface Feed Box
08.0195.00



Suspension strap L 2000 mm
03.8511.GN



48-V Power Loop L 3500 mm
03.8522.GN



48-V Power Loop L 2500 mm
03.8521.GN



Individual Ceiling Feed Box
08.0180.00



Wall Mounted Feed Box
08.0182.00



Suspension strap L 1000 mm
03.8510.GN



Suspension strap L 3000 mm
03.8512.GN



Suspension strap L 1500 mm
03.8513.GN