

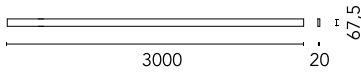
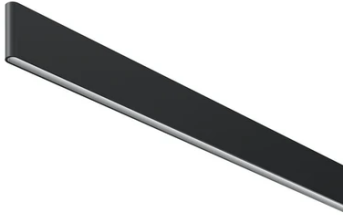
Belt L 3000 mm Casambi integrated

New

03.8501.14.CB - Black Leather

Electromechanical profile for interior use with integrated linear lighting for suspended installation available with 2 or 3 m lengths. Installation via suspension straps on the ceiling and remote power kit, to be ordered separately. Up&Down system controlled via DALI or CASAMBI individually and via 1-10V all together (Broadcast).

Electromechanical profile for interior use with integrated linear lighting for suspended installation available with 2 or 3 m lengths. Installation via suspension straps on the ceiling and remote power kit, to be ordered separately. Up&Down system controlled via DALI or CASAMBI individually and via 1-10V all together (Broadcast).

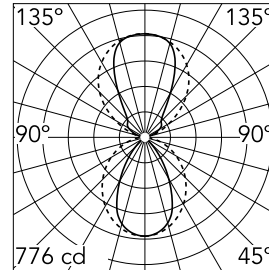


Main specifications

| | | | |
|------------------------|-------|-----------------------|---------------------|
| Number of heads | 1 | Net lumen (lm) | 2542 |
| Lamp category | LED | Mountings | Suspension |
| Power (W) | 83W | Environment | Indoor dry location |
| CCT (K) | 2700K | | |
| CRI | 95 | | |

Optical

| | |
|-----------------------------------|------------------|
| Lighting type | Indirect, Direct |
| LED type | Top LED |
| Light distribution | Symmetric |
| Optical type | Diffused light |
| Beam angle (°) | 60 |
| Beam angle C90-270 (°) | 100 |
| Beam angle ind (°) | 70 |
| Beam angle ind C90-270 (°) | 90 |



| | |
|-------------|------------|
| Beam Angle: | 60° |
| h(m) | E(lx) D(m) |
| 1 | 776 1.16 |
| 2 | 194 2.31 |
| 3 | 86 3.47 |
| 4 | 48 4.63 |
| 5 | 31 5.79 |

Luminous flux luminaire
2542 lm

Electrical

| | |
|-------------------------|---------------------|
| Driver | Remote excluded |
| Driver type | Dimmable Casambi |
| Emergency | Without |
| Insulation class | III |

Physical

| | |
|--------------------|---------------|
| Color | Black Leather |
| Orientation | Fixed |
| Weight (kg) | 3.3 |
| Length (mm) | 3000 |

Note

Power kit and suspension straps sold separately. For the sizing of the installation keep a safety margin of 15% of the maximum power of the LED power source.



Belt L 3000 mm Casambi integrated



Individual Ceiling Feed Box
08.0180.00



Individual Surface Feed Box
08.0194.00



48-V Power Loop L 3500 mm
03.8522.14



Suspension strap L 3000 mm
03.8512.14



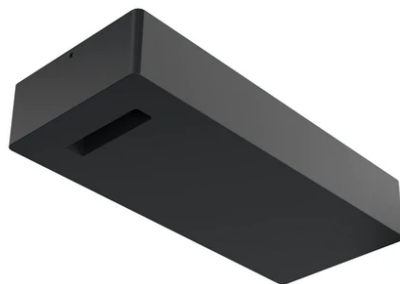
Suspension strap L 2000 mm
03.8511.14



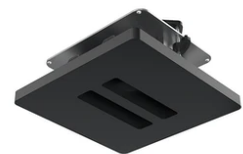
Suspension strap L 1000 mm
03.8510.14



Wall Mounted Feed Box
08.0182.00



Surface Driver Box 96W – 48V, 110-240V.
06.0173.14



Double Ceiling Feed Box
08.0181.00



LED Power Supply Source for remote installation. 48V. 100Vac (150W)-240Vac (200W)
60.9607



Suspension strap L 2500 mm
03.8514.14



Suspension strap L 1500 mm
03.8513.14



48-V Power Loop L 2500 mm
03.8521.14



48-V Power Loop L 1500 mm
03.8520.14



Double Surface Feed Box
08.0195.00



LED power supply source for remote installation, 48V/120W. 220/240 Vac
60.9170