

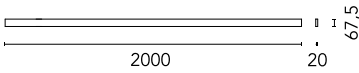
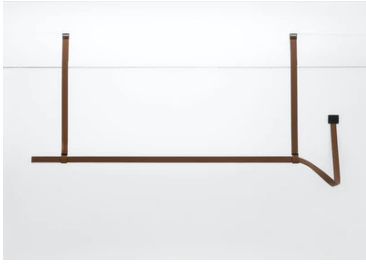
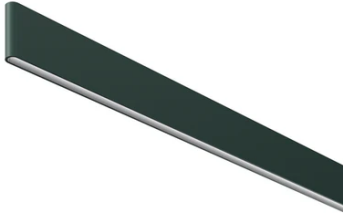
## Belt L 2000 mm Dimmable 1-10V

New

### 03.8505.GN.1V - Green Leather

Electromechanical profile for interior use with integrated linear lighting for suspended installation available with 2 or 3 m lengths. Installation via suspension straps on the ceiling and remote power kit, to be ordered separately. Up&Down system controlled via DALI or CASAMBI individually and via 1-10V all together (Broadcast).

Electromechanical profile for interior use with integrated linear lighting for suspended installation available with 2 or 3 m lengths. Installation via suspension straps on the ceiling and remote power kit, to be ordered separately. Up&Down system controlled via DALI or CASAMBI individually and via 1-10V all together (Broadcast).

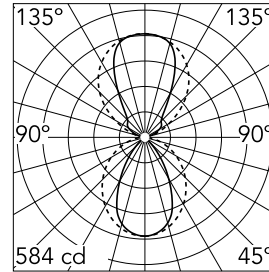


### Main specifications

|                        |       |                       |                     |
|------------------------|-------|-----------------------|---------------------|
| <b>Number of heads</b> | 1     | <b>Net lumen (lm)</b> | 1915                |
| <b>Lamp category</b>   | LED   | <b>Mountings</b>      | Suspension          |
| <b>Power (W)</b>       | 55W   | <b>Environment</b>    | Indoor dry location |
| <b>CCT (K)</b>         | 3000K |                       |                     |
| <b>CRI</b>             | 95    |                       |                     |

### Optical

|                                   |                  |
|-----------------------------------|------------------|
| <b>Lighting type</b>              | Indirect, Direct |
| <b>LED type</b>                   | Top LED          |
| <b>Light distribution</b>         | Symmetric        |
| <b>Optical type</b>               | Diffused light   |
| <b>Beam angle (°)</b>             | 60               |
| <b>Beam angle C90-270 (°)</b>     | 100              |
| <b>Beam angle ind (°)</b>         | 80               |
| <b>Beam angle ind C90-270 (°)</b> | 90               |



|                    |              |             |
|--------------------|--------------|-------------|
| <b>Beam Angle:</b> | 60°          |             |
| <b>h(m)</b>        | <b>E(lx)</b> | <b>D(m)</b> |
| 1                  | 584          | 1.16        |
| 2                  | 146          | 2.31        |
| 3                  | 65           | 3.47        |
| 4                  | 37           | 4.63        |
| 5                  | 23           | 5.79        |

Luminous flux luminaire  
1915 lm

### Electrical

|                         |                 |
|-------------------------|-----------------|
| <b>Driver</b>           | Remote excluded |
| <b>Driver type</b>      | Dimmable 1-10V  |
| <b>Emergency</b>        | Without         |
| <b>Insulation class</b> | III             |

### Physical

|                    |               |
|--------------------|---------------|
| <b>Color</b>       | Green Leather |
| <b>Orientation</b> | Fixed         |
| <b>Weight (kg)</b> | 2.2           |
| <b>Length (mm)</b> | 2000          |

### Note

Power kit and suspension straps sold separately. For the sizing of the installation keep a safety margin of 15% of the maximum power of the LED power source.



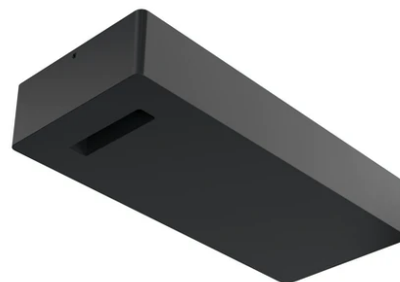
# Belt L 2000 mm Dimmable 1-10V



Individual Surface Feed Box  
08.0194.00



Suspension strap L 1500 mm  
03.8513.GN



Surface Driver Box 96W – 48V, 110-240V.  
06.0173.14



Suspension strap L 2000 mm  
03.8511.GN



Suspension strap L 1000 mm  
03.8510.GN



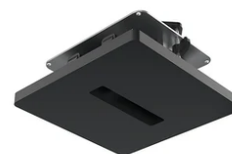
Suspension strap L 3000 mm  
03.8512.GN



48-V Power Loop L 2500 mm  
03.8521.GN



48-V Power Loop L 1500 mm  
03.8520.GN



Individual Ceiling Feed Box  
08.0180.00



---

Suspension strap L 2500 mm  
03.8514.GN



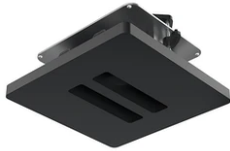
---

LED Power Supply Source for remote  
installation. 48V. 100Vac (150W)-240Vac  
(200W)  
60.9607



---

LED power supply source for remote  
installation, 48V/120W. 220/240 Vac  
60.9170



---

Double Ceiling Feed Box  
08.0181.00



---

Double Surface Feed Box  
08.0195.00



---

48-V Power Loop L 3500 mm  
03.8522.GN



---

Wall Mounted Feed Box  
08.0182.00