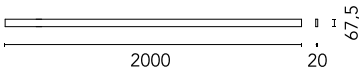
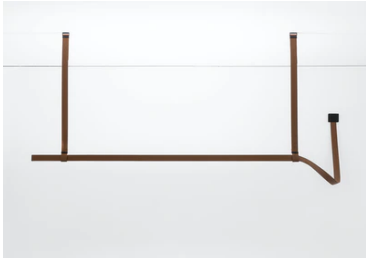


## Belt L 2000 mm Dimmable 1-10V

### 03.8505.14.1V - Black Leather

Electromechanical profile for interior use with integrated linear lighting for suspended installation available with 2 or 3 m lengths. Installation via suspension straps on the ceiling and remote power kit, to be ordered separately. Up&Down system controlled via DALI or CASAMBI individually and via 1-10V all together (Broadcast).

Electromechanical profile for interior use with integrated linear lighting for suspended installation available with 2 or 3 m lengths. Installation via suspension straps on the ceiling and remote power kit, to be ordered separately. Up&Down system controlled via DALI or CASAMBI individually and via 1-10V all together (Broadcast).

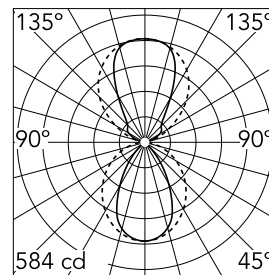


### Main specifications

Number of heads	1	Net lumen (lm)	1915
Lamp category	LED	Mountings	Suspension
Power (W)	55W	Environment	Indoor
CCT (K)	3000K		
CRI	95		

### Optical

Lighting type	Indirect, Direct
LED type	Top LED
Light distribution	Symmetric
Optical type	Diffused light
Beam angle (°)	60
Beam angle C90-270 (°)	100
Beam angle ind (°)	80
Beam angle ind C90-270 (°)	90



Beam Angle:	60°		
	h(m)	E(lx)	D(m)
1	584	1.16	
2	146	2.31	
3	65	3.47	
4	37	4.63	
5	23	5.79	

Luminous flux luminaire  
1915 lm

### Electrical

Driver	Remote
Driver type	Electronic dimmable 1-10V
Emergency	Without
Insulation class	III

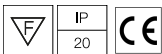
### Physical

Color	Black Leather
Orientation	Fixed
Weight (kg)	2.2
Length (mm)	2000

### Note

Power kit and suspension straps sold separately. For the sizing of the installation keep a safety margin of 15% of the maximum power of the LED power source.

### Certification / Marking



## Belt L 2000 mm Dimmable 1-10V



LED Power Supply Source for remote installation. 48V/320W. 100/240 Vac  
60.8919



LED Power Supply Source for remote installation. 48V/185W. 100/240 Vac  
60.9024



LED power supply source for remote installation, 48V/120W. 220/240 Vac  
60.9170



Suspension strap L 1000 mm  
03.8510.14



Suspension strap L 2000 mm  
03.8511.14



Suspension strap L 3000 mm  
03.8512.14



48-V Power Loop L 1500 mm  
03.8520.14



48-V Power Loop L 2500 mm  
03.8521.14

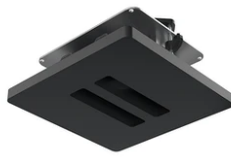


48-V Power Loop L 3500 mm  
03.8522.14



---

Individual Ceiling Feed Box  
08.0180.00



---

Double Ceiling Feed Box  
08.0181.00



---

Wall Mounted Feed Box  
08.0182.00



---

Suspension strap L 1500 mm  
03.8513.14



---

Suspension strap L 2500 mm  
03.8514.14



---

Individual Surface Feed Box  
08.0194.00



---

Double Surface Feed Box  
08.0195.00