

Belt L 2000 mm Dali Version

New

03.8505.18.DA - Natural Leather

Electromechanical profile for interior use with integrated linear lighting for suspended installation available with 2 or 3 m lengths. Installation via suspension straps on the ceiling and remote power kit, to be ordered separately. Up&Down system controlled via DALI or CASAMBI individually and via 1-10V all together (Broadcast).

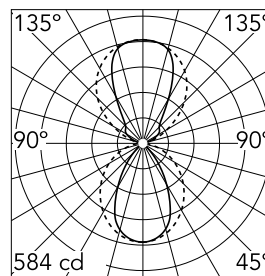
Electromechanical profile for interior use with integrated linear lighting for suspended installation available with 2 or 3 m lengths. Installation via suspension straps on the ceiling and remote power kit, to be ordered separately. Up&Down system controlled via DALI or CASAMBI individually and via 1-10V all together (Broadcast).

Main specifications

Number of heads	1	Net lumen (lm)	1915
Lamp category	LED	Mountings	Suspension
Power (W)	55W	Environment	Indoor dry location
CCT (K)	3000K		
CRI	95		

Optical

Lighting type	Indirect, Direct
LED type	Top LED
Light distribution	Symmetric
Optical type	Diffused light
Beam angle (°)	60
Beam angle C90-270 (°)	100
Beam angle ind (°)	80
Beam angle ind C90-270 (°)	90



Beam Angle: 60°

	h(m)	E(lx)	D(m)
1	584	1.16	
2	146	2.31	
3	65	3.47	
4	37	4.63	
5	23	5.79	

Luminous flux luminaire
1915 lm

Electrical

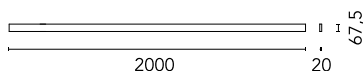
Driver	Remote excluded
Driver type	Dimmable DALI
Emergency	Without
Insulation class	III

Physical

Color	Natural Leather
Orientation	Fixed
Weight (kg)	2.2
Length (mm)	2000

Note

Power kit and suspension straps sold separately. For the sizing of the installation keep a safety margin of 15% of the maximum power of the LED power source.



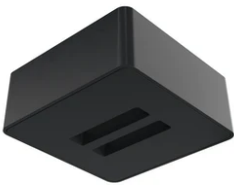
Belt L 2000 mm Dali Version



48-V Power Loop L 3500 mm
03.8522.18



Wall Mounted Feed Box
08.0182.00



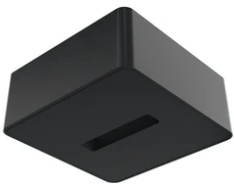
Double Surface Feed Box
08.0195.00



LED power supply source for remote
installation, 48V/120W. 220/240 Vac
60.9170



Suspension strap L 1000 mm
03.8510.18



Individual Surface Feed Box
08.0194.00



Suspension strap L 1500 mm
03.8513.18



Individual Ceiling Feed Box
08.0180.00



Suspension strap L 2000 mm
03.8511.18



Suspension strap L 2500 mm
03.8514.18



Suspension strap L 3000 mm
03.8512.18



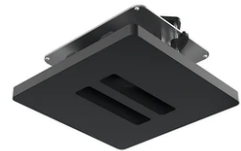
48-V Power Loop L 2500 mm
03.8521.18



LED Power Supply Source for remote
installation. 48V. 100Vac (150W)-240Vac
(200W)
60.9607



Surface Driver Box 96W – 48V, 110-
240V.
06.0173.14



Double Ceiling Feed Box
08.0181.00



48-V Power Loop L 1500 mm
03.8520.18