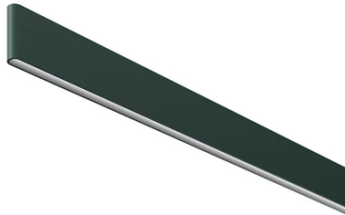


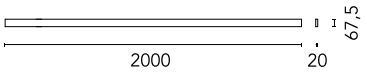
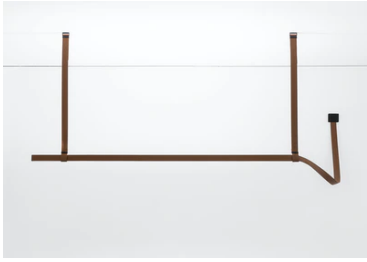
## Belt L 2000 mm Casambi integrated

### 03.8505.GN.CB - Green Leather



Electromechanical profile for interior use with integrated linear lighting for suspended installation available with 2 or 3 m lengths. Installation via suspension straps on the ceiling and remote power kit, to be ordered separately. Up&Down system controlled via DALI or CASAMBI individually and via 1-10V all together (Broadcast).

Electromechanical profile for interior use with integrated linear lighting for suspended installation available with 2 or 3 m lengths. Installation via suspension straps on the ceiling and remote power kit, to be ordered separately. Up&Down system controlled via DALI or CASAMBI individually and via 1-10V all together (Broadcast).

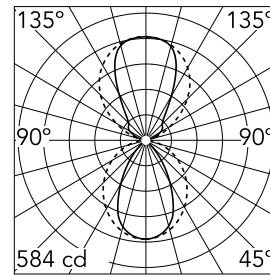


### Main specifications

<b>Number of heads</b>	1	<b>Net lumen (lm)</b>	1915
<b>Lamp category</b>	LED	<b>Mountings</b>	Suspension
<b>Power (W)</b>	55W	<b>Environment</b>	Indoor
<b>CCT (K)</b>	3000K		
<b>CRI</b>	95		

### Optical

<b>Lighting type</b>	Indirect, Direct
<b>LED type</b>	Top LED
<b>Light distribution</b>	Symmetric
<b>Optical type</b>	Diffused light
<b>Beam angle (°)</b>	60
<b>Beam angle C90-270 (°)</b>	100
<b>Beam angle ind (°)</b>	80
<b>Beam angle ind C90-270 (°)</b>	90



<b>Beam Angle:</b>	60°		
<b>h(m)</b>	<b>E(lx)</b>	<b>D(m)</b>	
1	584	1.16	
2	146	2.31	
3	65	3.47	
4	37	4.63	
5	23	5.79	

Luminous flux luminaire  
1915 lm

### Electrical

<b>Driver</b>	Remote
<b>Driver type</b>	Electronic dimmable CASAMBI
<b>Emergency</b>	Without
<b>Insulation class</b>	III

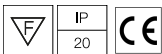
### Physical

<b>Color</b>	Green Leather
<b>Orientation</b>	Fixed
<b>Weight (kg)</b>	2.2
<b>Length (mm)</b>	2000

### Note

Power kit and suspension straps sold separately. For the sizing of the installation keep a safety margin of 15% of the maximum power of the LED power source.

### Certification / Marking



## Belt L 2000 mm Casambi integrated



LED Power Supply Source for remote installation. 48V/320W. 100/240 Vac  
60.8919



LED Power Supply Source for remote installation. 48V/185W. 100/240 Vac  
60.9024



LED power supply source for remote installation, 48V/120W. 220/240 Vac  
60.9170



Suspension strap L 1000 mm  
03.8510.GN



Suspension strap L 2000 mm  
03.8511.GN



Suspension strap L 3000 mm  
03.8512.GN



48-V Power Loop L 1500 mm  
03.8520.GN



48-V Power Loop L 2500 mm  
03.8521.GN

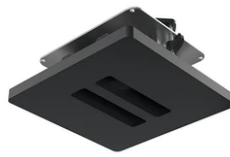


48-V Power Loop L 3500 mm  
03.8522.GN



---

Individual Ceiling Feed Box  
08.0180.00



---

Double Ceiling Feed Box  
08.0181.00



---

Wall Mounted Feed Box  
08.0182.00



---

Suspension strap L 1500 mm  
03.8513.GN



---

Suspension strap L 2500 mm  
03.8514.GN



---

Individual Surface Feed Box  
08.0194.00



---

Double Surface Feed Box  
08.0195.00