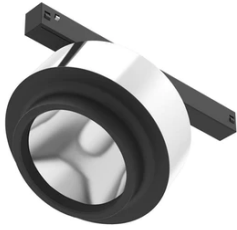


## Anthony Spot Track Dimmable 1-10V

03.8025.05.1V - Chrome

Accent lighting LED module to be installed in The Tracking Magnet System. To obtain flood optics (35°) order Anthony Spot Medium + flood lens.

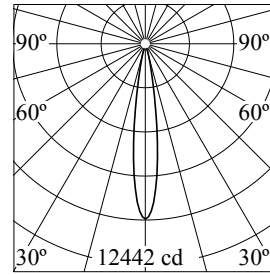


### Main specifications

<b>Number of heads</b>	1	<b>Net lumen (lm)</b>	1241
<b>Lamp category</b>	LED	<b>Mountings</b>	Track
<b>Power (W)</b>	16.5W	<b>Environment</b>	Indoor dry location
<b>CCT (K)</b>	2700K		
<b>CRI</b>	90		

### Optical

<b>Lighting type</b>	Direct
<b>LED type</b>	LED array
<b>Light distribution</b>	Symmetric
<b>Optical type</b>	Spot
<b>Beam angle (°)</b>	15
<b>Beam angle C90-270 (°)</b>	15



<b>Beam Angle:</b>	15°		
<b>h(m)</b>	<b>E(lx)</b>	<b>D(m)</b>	
1	12442	0.27	
2	3110	0.54	
3	1382	0.81	
4	778	1.07	
5	498	1.34	

Luminous flux luminaire  
1241 lm



### Electrical

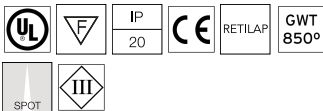
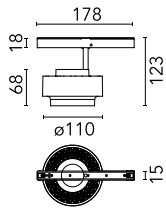
<b>Voltage (V)</b>	48.00	<b>Insulation class</b>	III
<b>Dimmable</b>	Yes		
<b>Driver</b>	Remote excluded		
<b>Driver type</b>	Dimmable 1-10V		
<b>Emergency</b>	Without		

### Physical

<b>Color</b>	Chrome	<b>Spot diameter (mm)</b>	110
<b>Orientation</b>	Adjustable		
<b>Weight (kg)</b>	0.43		
<b>Tilt (°)</b>	90		
<b>Rotation (°)</b>	360		

### Note

Only compatible with 1-10V profile version. For wireless lighting control, choose integrated Casambi versions.



## Anthony Spot Track Dimmable 1-10V



---

Honeycomb  
08.8419.14A

Flood lens  
08.0050.00

Elliptical lens  
08.8418.68A