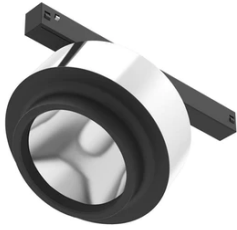


Anthony Spot Track Dali Version

03.8028.05.DA - Chrome

Accent lighting LED module to be installed in The Tracking Magnet System. To obtain flood optics (35°) order Anthony Spot Medium + flood lens.

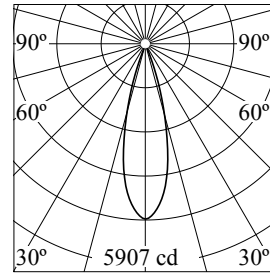


Main specifications

Number of heads	1	Net lumen (lm)	1426
Lamp category	LED	Mountings	Track
Power (W)	16.5W	Environment	Indoor dry location
CCT (K)	3000K		
CRI	90		

Optical

Lighting type	Direct
LED type	LED array
Light distribution	Symmetric
Optical type	Medium
Beam angle (°)	28
Beam angle C90-270 (°)	28



Beam Angle:	28°		
	h(m)	E(lx)	D(m)
1	5907	0.49	
2	1477	0.98	
3	656	1.47	
4	369	1.97	
5	236	2.46	

Luminous flux luminaire
1426 lm



Electrical

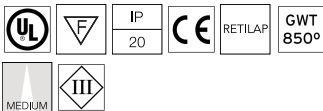
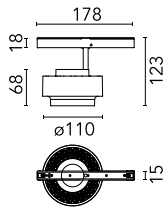
Voltage (V)	48.00	Insulation class	III
Dimmable	Yes		
Driver	Remote excluded		
Driver type	Dimmable DALI		
Emergency	Without		

Physical

Color	Chrome	Spot diameter (mm)	110
Orientation	Adjustable		
Weight (kg)	0.43		
Tilt (°)	90		
Rotation (°)	360		

Note

Only compatible with DALI profile version. For wireless lighting control, choose integrated Casambi versions.



Anthony Spot Track Dali Version



Elliptical lens
08.8418.68A

Honeycomb
08.8419.14A

Flood lens
08.0050.00